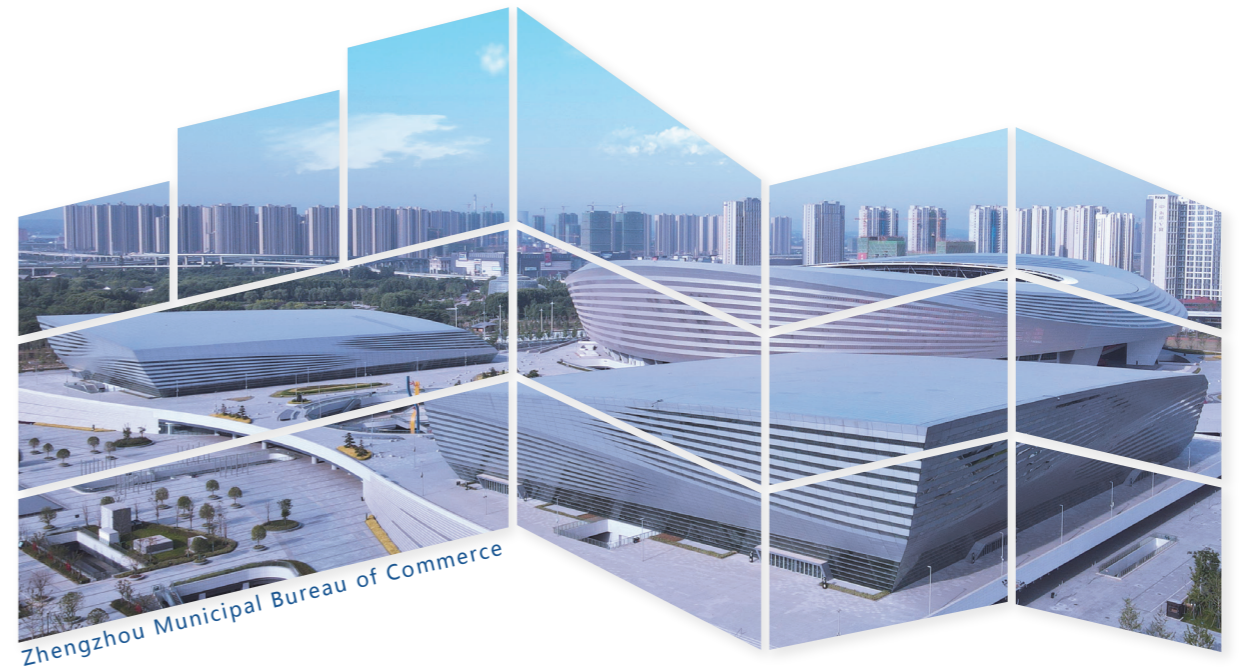


2020 Key Projects of Zhengzhou



Zhengzhou Municipal Bureau of Commerce

Chief Editor of Zhengzhou Municipal Bureau of Commerce



Chief Editor of Zhengzhou Municipal Bureau of Commerce
No. 4, Songshan Road North, Zhengzhou City, China
E-mail: zzfdi@163.com
Tel.: +86-371-67185491 67182087
Fax: +86-371-67446395 67180376
Website: <http://swj.zhengzhou.gov.cn>



01

Key Recommended Carriers

- Electronic Information 01-06
- Automobile and Equipment Manufacturing 07-20
- New Materials 21-22
- Finance 23-24
- High-tech Services 25-32
- Trade 33-36
- Cultural Creative Tourism 37-40
- Modern Food Manufacturing 41-42
- Health Care and Elderly Care 43-46
- Aluminum Deep Processing 47-48

02

Key Projects

| 51-69



▲ KEY PROJECTS OF
ZHENGZHOU

Intelligent Terminal (Mobile Phone) Industrial Park in Zhengzhou Airport Economy Zone

Planning

The park is located at the intersection of Huaxia Avenue and Donghai Road, a high-end manufacturing cluster in the southern part of Zhengzhou Airport Economy Zone, with a total area of 810 mu and a total construction area of 1.16 million square meters.

The park plans and constructs functional areas such as enterprise headquarters area, mobile phone R&D area, mobile phone production area, supporting industries area and life service area, as well as supporting service facilities such as customized & standardized industrial plants, spare parts plants, display centers, testing platforms, commercial centers, life service centers, staff activity centers, and entrepreneur clubs.



Carrier Profile

The park holds the mission of building an important global smart phone R&D and manufacturing base and an international electronic information industry base. It focuses on the smart terminal products to actively introduce high-end enterprises, including brand owners, OEMs, supporting companies, logistics companies, and operators, and develop a whole industrial chain model integrating mobile phone R&D, mobile phone manufacturing, spare parts production, software development as well as product design and sales, with a total investment of about RMB 5 billion. Up to now, 78 enterprises have settled in the park. In 2018, it produced 115 million non-Apple mobile phones, realizing an output value of RMB 14.24 billion.

The A area of the park covers an area of 370 mu and a construction area of 610,000 square meters. The park was officially opened on January 13, 2014. At present, 48 enterprises have settled in the park.

The B, C, D and E areas of the industrial park cover an area of 440 mu and a construction area of 548,000 square meters. It adopts the standardized, diversified and ecological planning model to focus on the link and integration of production and life, and create a comfortable and green ecological park. The project is developed in two phases. The phase I B/C areas are planned to build an intelligent terminal (mobile phone) industrial park with a construction area of 311,000 square meters, which will form a whole industrial chain integrating mobile phone R&D, mobile phone manufacturing, spare parts production, software development and product design and sales. The phase II D/E areas are planned to build a photoelectric display industrial park with a construction area of 237,000 square meters to build photoelectric display industrial clusters including glass substrates, panels, modules, liquid crystal displays as well as complete phones, covering the upstream, midstream and downstream photoelectric display industry.

Infrastructure

Since its construction, the park has actively built infrastructure such as roads, electricity and greening projects to fully guarantee the production and operation activities of the enterprises that have settled in the park. At the same time, it actively builds service platforms and focuses on building incubator platforms, intelligent terminal testing platforms, supply chain platforms and comprehensive government affairs platforms. On December 29, 2016, the incubator platform (intelligent terminal incubator) was recognized as a national science and technology business incubator by the Ministry of Science and Technology, becoming the first national science and technology business incubator in Zhengzhou Airport Economy Zone.



Scope of Invitation

R&D and manufacturing of smart phones, tablet computers, communication electronic equipment, and their spare parts.

Contact

Rao Kai  +86-371-86199999

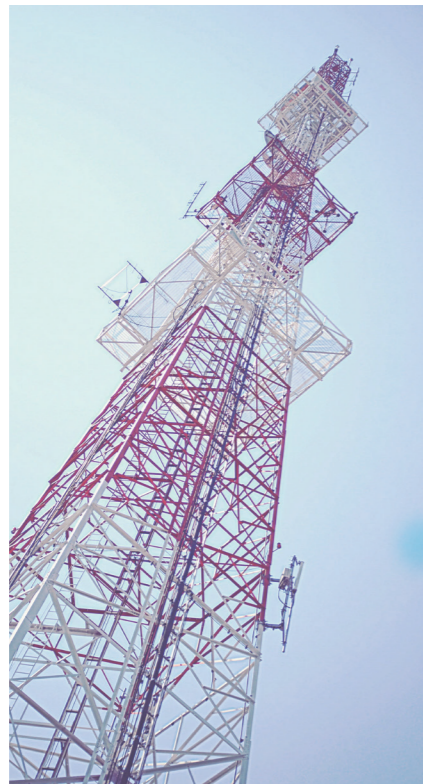


Zhengzhou Beidou Industrial Park Incubation Base

Planning

The project is located at No. 50 Wutong Street (northeast of the intersection of Changchun Road and Wutong Street) in Zhengzhou High-tech Zone. It is adjacent to Bitao Road in the east, Changchun Road in the west, Wutong Street in the south and Hehuan Street in the north. It is located on both sides of Hongrui Road and is close to Wutong Street Station of Line 1, with an advantageous geographical location and mature supporting facilities. The construction land area of the project is 88,664 square meters (133.4 mu), with a total planned construction area of 168,000 square meters. It is divided into four sections: R&D test, incubation pilot test, light production and supporting services.

The phase I of 41,000 square meters has been completed and put into use. The phase II is planned to be completed next year.



Carrier Profile

The project is jointly constructed by Zhengzhou High-tech Zone and Beihang University Science and Technology Park through PPP mode. It is a key project in Henan Province and has been included in the PPP project library of the Ministry of Finance. The project relies on the technological advantages of the PLA Information Engineering University, Beihang University and other universities, and is led by the innovative development based on the "collaboration between governments, enterprises, universities, research institutes, and end-users" to implement the Beidou whole industrial chain development strategy, introduce and cultivate a number of key Beidou application enterprises and research institutes, build a Beidou technology innovation service platform, and improve the Beidou technology R&D and application system. The project will rely on the platform of the smart park and support the information ecological environment of the park with the six platforms of "Beidou R&D, technology transfer, talent support, financial incubation, smart park and precise matching" so that the park can provide Beidou technology and talent, policy bonus and the convenience of modern information technology for enterprises settling here, build a favorable environment for Beidou industry innovation and development and form a leading Beidou innovative industrial cluster and Beidou technology innovation and industrialization base in China.

The project will give full play to Zhengzhou's advantages as a national Internet backbone direct connection point and a national communication network exchange hub to carry out the research on Beidou independent and controllable key technology and high-end product R&D, encourage technological innovation, production and operation mode innovation and industrial format innovation, build an innovation system in which enterprises play the leading role, the market provides orientation, and the efforts of enterprises, universities and research institutes are integrated, accelerate the in-depth military-civil integration, and promote technological application and achievement transformation.

Up to now, the project that has gathered the main Beidou technology platforms such as Zhengzhou Beidou Industrial Park include "Beidou and Location Services Henan Engineering Laboratory", "Henan Geographic Information Academician Workstation" and "Henan CORS Data Processing Center". It has attracted more than 40 leading enterprises and Beidou application upstream and downstream enterprises including South Survey, ZTE Big Data, ePRO Software, Sailong Airlines, Wuxing Junke, Fanhai Sanjiang and Zhongda Anhe. Among them, Beidou application enterprises realize an average annual output value of about RMB 30 million, actively driving the agglomeration and development of Beidou related industries in the base.

The project mainly forms the core supporting service capability of the Beidou industry through resource integration and develops the application of the satellite navigation system making full use of the reliability, controllability and functional characteristics of the Beidou system. The project will expand industrial space and transform and upgrade traditional industries so as to realize industrial agglomeration and development through the application and service of the Beidou system.

Contact

Ye Fei

+86-371-58696990

+86-13526851777

Fei.y@buaastars.com



Infrastructure

The project has already built the "Beidou Satellite Navigation Operation Management System", "Enterprise Information Management Platform", "Investment and Financing Service Platform", "Industry-University-Research Integration Service Platform", "Intellectual Property Service Platform" and "Human Resource Management Platform" to provide one-stop service for enterprises that settle in the base.

At the same time, the base employs five Beidou professional entrepreneurship mentors and 10 other professional entrepreneurship mentors to provide entrepreneurship guidance and training services for enterprises that settle in the base in terms of technology R&D, business model building, operation and management, capital operation and marketing, and build a new open entrepreneurship incubation service platform covering the whole industrial chain from low to high for entrepreneurs.

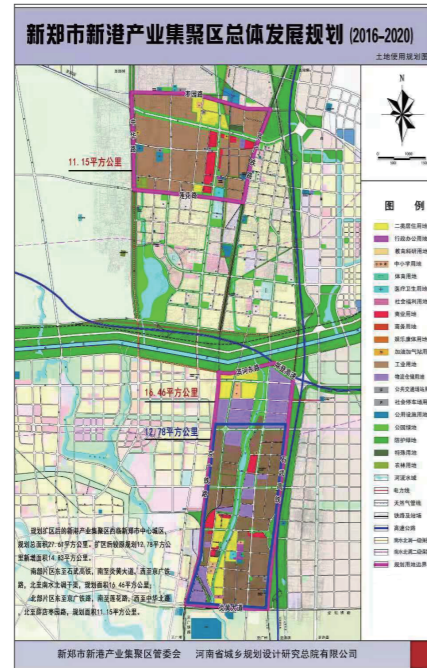
Scope of Invitation

The project forms an industrial cluster around the industrial direction of the "Beidou remote sensing industry, big data application, mobile communication and intelligent transportation" to promote the vigorous development of Beidou satellite navigation industry in Henan.

Xinzheng Xingang Industrial Cluster

Planning

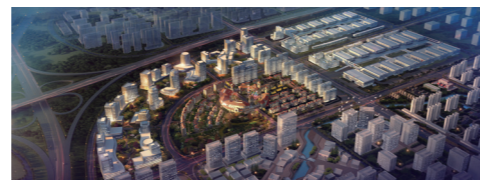
The industrial cluster is located in the eastern part of Xinzheng City, with a planned area of 27.61 square kilometers. It is adjacent to Zhengzhou Airport Economy Zone in the east and the city center of Xinzheng in the west. It is located in the half-hour economic circle of Zhengzhou metropolitan area, and is adjacent to Zhengzhou Xinzheng International Airport, Beijing-Guangzhou Railway, Beijing-Guangzhou High-speed Railway, Beijing-Hong Kong-Macao Expressway and Shangqiu-Dengfeng Expressway pass through it. It has the unique advantage of integrating airport, highway and railway.



Carrier Profile

Since its establishment in December 2008, the industrial cluster promotes high-quality economic development with new development concept as the guide and investment promotion, project construction and environmental optimization as the focus and has been successively rated as Henan Province's two-star industrial cluster and Zhengzhou's top two industrial clusters. In 2019, there are 90 enterprises above designated size, with sales revenue of RMB 37 billion and tax revenue of RMB 1 billion.

Industrial situation: we will focus on developing strategic emerging industries while developing traditional leading industries and promote high-end, intelligent and green industries. The first is to promote the transformation of the traditional food industry to the healthy food and functional food industry, and the transformation of the traditional medicine industry to modern biological medicine and the healthy life industry. The second is to vigorously cultivate advanced manufacturing clusters such as electronic information and intelligent manufacturing. The electronic information industry takes professional sewage treatment plants as carriers and develops in a staggered way with Zhengzhou Airport Economy Zone. It develops "chips" and "screens" in parallel to actively develop upstream and downstream industries such as new display, integrated circuits and intelligent terminals. The intelligent manufacturing industry focuses on industrial robots, intelligent sensors and intelligent measurement and control devices, and actively develops basic industries such as precision and core components.



Infrastructure

According to the standard of "eight connections and six haves", a total of RMB 5 billion has been invested to complete the construction and upgrading of roads such as Xueyuan Road and Nuanquan Road. The construction of roads such as the east extension of Xincun Avenue and Hongcheng Road is accelerating, and the "five vertical and eight horizontal" main road network structure of the park has been initially formed. Two water plants, three sewage treatment plants, three substations and 400,000 square meters of standardized factory buildings have been completed. Water supply, power supply and gas supply pipelines have basically been integrated, providing a broader space for industrial development.



Scope of Invitation

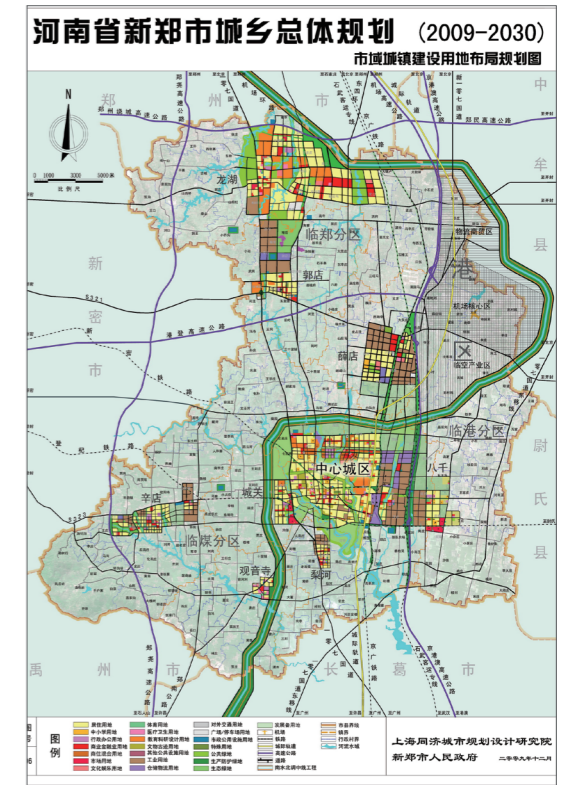
Electronic information, intelligent manufacturing, etc.

Contact

Liu Youchun

+86-371-62613615

xzngxzsyj@163.com





Zhengzhou General Aviation Pilot Area

Planning

The pilot area has completed the strategic planning for industrial development and the overall planning for the core area and passed expert review and approval by the municipal government. As a professional aviation park of Zhengzhou Airport Economy Zone, it strives to seek the synergy with Zhengzhou Airport Economy Zone in planning preparation, project introduction and infrastructure construction, thus realizing the "five unifications" of the planning and development. The area is planned to cover 120 square kilometers, stretching from the Yellow River in the north to Wuyun Mountain in the south. The core area, with a planned area of 21.3 square kilometers, focuses on the three major sectors of navigation manufacturing, navigation operation and navigation services to build functional areas such as aircraft takeoff or landing, maintenance services, educational training, aircraft assembly, and parts manufacturing relying on the platform of Zhengzhou Shangjie Airport and according to the spatial layout structure of "one core area, two centers, one greenway, three axes, and multiple groups".

Carrier Profile

The pilot area aims to build a general aviation hub in the Central Plains Economic Zone, a national business aircraft operation base, a venue for the EAA AirVenture, and a national first-class general aviation park. It will focus on the development of business aircraft operation, FBO operation base, commercial transportation, aircraft leasing as well as navigation entertainment and leisure with the development of navigation service industry as the core. It will drive the development of navigable aircraft assembly, parts manufacturing, aviation materials and small aircraft processing and radiate the development of commercial real estate, financial insurance and other industries. Zhengzhou General Aviation Pilot Area has unique development advantages. First, it enjoys background advantages. Since 2009, China has successively issued a range of documents to support the development of navigation. At the same time, the Central Plains Economic Zone has been approved, providing important market support for the future development of Zhengzhou navigation. Second, it enjoys location advantages. Zhengzhou is located in the Central Plains, with convenient transportation. Two-thirds of the major cities in China and most of the leading navigation areas can be reached during a 1.5-hour flight. Zhengzhou plays an obvious role in supporting the construction of the national general aviation network and emergency rescue system. Third, it enjoys infrastructure advantages. Shangjie Airport has obtained the airport



operating license issued by the CAAC Central and Southern Regional Administration. It has a runway with a length of 2,000 meters and a width of 45 meters. The airport is flat and has good clearance conditions within a radius of 10 kilometers. Aircrafts here can reach 14 military and civil airports around Zhengzhou in one stop. It is a rare platform for the development of general aviation and currently the largest and best navigable airport in China. Fourth, it gains advantages in navigation services. Shangjie Airport has the first airline company in Henan Province - Henan Lanxiang General Airline Co., Ltd., and eight other qualified companies, and has rich experience in carrying out a variety of navigation services. Fifth, it enjoys the advantages of industrial synergy. Zhengzhou Airport has opened 161 routes, including 28 all-cargo routes, ranking first in inland China. The development of transportation aviation will drive the development of general aviation, which in turn will promote the development of transportation aviation. Sixth, it enjoys talent and technical advantages. Zhengzhou has a host of aviation research enterprises, institutions and universities such as the 27th Research Institute of CETC, Zhengzhou Zhengfei Technology Co., Ltd., and Zhengzhou University of Aeronautics, which lay a foundation for the development of aviation manufacturing industry while training a large number of aviation talented people. Up to now, 40 general aviation enterprises such as Henan Lanxiang General Airline Co., Ltd., Henan Yongxiang General Airline Co., Ltd. and Zhengzhou Soaring Aviation Company have settled and developed in the pilot area, with a fleet of 60 aircraft and a cumulative fixed asset investment of RMB 5 billion.

Infrastructure

Nearly RMB 2 billion has been invested in the overall relocation of five villages and the construction of three new communities in the area. Nearly RMB 500 million has been invested in the infrastructure construction of "nine roads and one lake" including 1st-4th Tonghang Road, Lantian Road, Baitian Road and Dongguo Lake, Wuzhuang substations, sewage treatment plants, South-to-North Water Diversion water plants, water, electricity gas and heating. At present, the "seven vertical and three horizontal" road network pattern in the core area has been formed, providing "accesses to seven public utilities and site leveling".



Scope of Invitation

Navigation company operation, business aircraft operation, FBO operation base, commercial transportation, aircraft leasing, navigation entertainment and leisure, navigation tourism, training of navigation pilots and navigation professionals, navigation aircraft assembly and parts manufacturing, aviation materials and small aircrafts processing as well as related industries such as commercial real estate and financial insurance.

Contact

Ma Jianwei +86-13938508162 zzthzsb@126.com

Gongyi Private Science and Technology Entrepreneurship Park

■ Planning

The park is located in Kangdian Town, Gongyi City, on the Zhengzhou-Luoyang industrial corridor. It was built in October 2003, and is near the Yellow River in the north and the Yiluo River in the east. Provincial Highway 312 and Lianyungang-Khorgas Expressway pass through the park. The planned National Highway 207 is located in the west of the park. There are historical and cultural relics such as Kang Baiwan Manor, Du Fu Cemetery, and the Ancient City Ruins of the Eastern Zhou Dynasty. The park is a professional park in Zhengzhou City. It was approved as one of 30 professional parks in Zhengzhou City in November 2012. In March 2013, the park and Kangdian Town team carried out rectification and integration. In 2015, the park was designated as "Henan small and medium-sized enterprise characteristic industrial cluster" by the Department of Industry and Information Technology of Henan Province and "Henan high-tech characteristic industrial base" by the Department of Science and Technology of Henan Province. The total planned area of the park is 8.57 square kilometers and the built-up area covers an area of 3 square kilometers. It is divided into north and south areas. The north area is based on Kangbei, Jiaowan, Zhangling and Shantou, while the south area is based on Kangnan, Kangbei, Yeling, Heinan and Heibei. Currently, 68 enterprises have settled in the park. In 2018, the regulatory detailed planning of the park was revised and approved by the municipal government.

The overall development goal of the park is to speed up the construction of the park, and have it upgraded to a provincial industrial cluster so as to reach a higher level. It will focus on upgrading and transforming the metal products industry to form a metal products industrial cluster integrating metal products R&D, production, modern logistics and modern marketing. The park will focus on training creative manufacturing industries such as equipment manufacturing with high technological content to gradually form an equipment manufacturing industrial cluster that combines upstream and downstream industries and side industries integrating one-stop equipment R&D, production, sales and services. It will strive to create a new industrialization and industry-city integration demonstration area, an important industrial support carrier of Gongyi City, and an important economic growth point in the western part of Gongyi.

■ Carrier Profile

The leading industries of the park are metal products and equipment manufacturing. Now 68 enterprises have settled in the park and there are 132 enterprises above designated size. There is one enterprise listed on the main board of Shenzhen Stock Exchange in 2007, namely Henan Hengxing Science & Technology Co., Ltd. There are two NEEQ enterprises: Henan Qianghong Magnesium Industry Technologies Corporation listed in 2015, and Henan Hengxing Steel Rig Co., Ltd. listed in 2016. After 15 years of development, the park has taken the main position in Gongyi's industrial and economic development. It plays an increasingly larger carrier role and leading role and continues to expand its radiation range. With the completion of the southern industrial park, the park will gradually form a comprehensive industrial park with a reasonable layout and beautiful environment, featuring private economy, guided by scientific and technological innovation and in line with the national industrialization policy. The metal products industry and special equipment manufacturing industry are its leading industries.



■ Infrastructure

In recent years, Kangdian Town has continuously stepped up the construction of infrastructure for the park and continued to improve and upgrade water supply, gas supply, power supply, greening, lighting and other projects. At present, water, electricity, roads and natural gas have reached full coverage, establishing a good image of the park and further enhancing the park's capital and talent attraction. In terms of water supply facilities, in addition to the construction of Wanquan Water Supply Plant in the north park, another RMB 750,000 has been invested in the construction of a water supply project in the south park this year, facilitating the water supply for newly settled enterprises. In terms of power facilities, the park has one 110KV substation and two main substations, which effectively guarantee the power supply for the production and life of enterprises. In terms of gas facilities, Gongyi Xin'ao Gas stations have been completed, with full coverage of gas in the park and 10 enterprises using natural gas. In terms of sewage treatment facilities, according to the development needs of the park, we plan to build a centralized sewage treatment plant with a daily treatment capacity of 3,000 tons in the north and south parks respectively. At present, the feasibility report has been completed and experts will be organized for review. In terms of administrative office services, we plan to set up a comprehensive service center in the park based on the platform of Youth Community, providing services in development and reform, planning, land, environmental protection and other fields, building a service bridge for enterprises. In terms of transportation facilities, an investment of RMB 1.75 million was invested this year to build the 2nd and 3rd branch roads to the south park, and RMB 150,000 to repair damaged roads and drains in the north park. In terms of greening and lighting projects, a 60-mu ecological garden has been built in the south park with an investment of RMB 7.8 million. At present, more than 1,000 trees have been planted and supporting fitness equipment and public toilets are under construction. RMB 300,000 has been invested in the construction of greening and lighting projects on both sides of the two branch roads in the south park, and RMB 100,000 in the installment of 32 solar street lamps along the bypass roads of the north park.

■ Scope of Invitation

Metal products, local equipment manufacturing, new materials, production service industry, etc.

■ Contact

Cao Lijie ☎ +86-371-64200569 📱 +86-13525572686 ✉ Kangdianzhen1@163.com



Gongyi Military-Civil Integration Intelligent Equipment Industrial Park

Planning

The park is located in Xicun Town in the south of Gongyi City, covering an area of 5.26 square kilometers. The core area of the planned park covers an area of 2 square kilometers (the red line area for phase I is 1,000 mu) and the development area 3.6 square kilometers. It mainly consists of industrial land, logistics land and R&D land. The industrial land covers an area of 224.68 hectares and is distributed on the west of highway 713, with navigation intelligent equipment and new military materials as leading industries. The logistics land covers an area of 80 hectares and is mainly distributed in the north of the industrial park, with intelligent logistics and warehousing functions. The R&D land covers an area of 10 hectares and is distributed on both sides of the family courtyard of Zhengzhou Yongtong Special Steel. It is mainly used for R&D of science and technology.

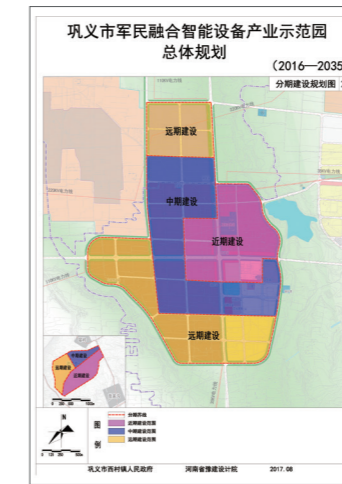
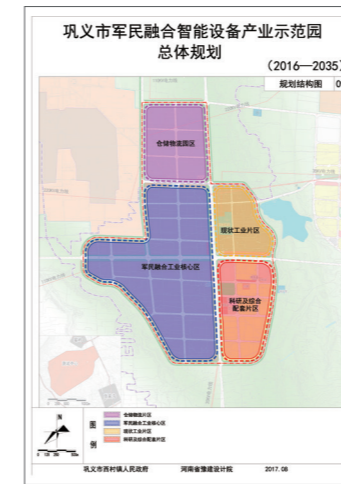
Carrier Profile

Based on Gongyi Industrial Cluster, Yulian Industrial Cluster, Refractory Materials Industrial Park and Private Science and Technology Park, the park gives full play to the advantages of the existing industrial base and military enterprises including the 713th Research Institute of CSIC, promotes the integration of the military-civil integration industry base with the original industrial park, promotes the upgrading of the industrial structure and equipment capacity of Gongyi, seizes the commanding heights in the development of the material industry and realizes the transformation from a traditional big industrial city into a strong industrial city so as to form a new situation of integrated development of economic construction and national defense construction. Its overall planning is "one base and four parks", of which the one base is the integration of military-civil integration industry base in Gongyi, Henan Province, and the four parks refer to the intelligent equipment industrial park (Didong Village, Xicun Town), high-end aluminum industrial park, new material industrial park and electronic information industrial park. The supporting area of the intelligent equipment industrial park consists of the residential area, administrative area, middle and primary school area, cultural and entertainment area, financial and business area and green square area. It builds a grid-style road network, with the center forming a cross-shaped road network. The east-west main roads are designed to be 36 meters wide, the south-north main roads 26 meters wide, and the outer ring and the secondary roads 20 meters wide. All roads are planned according to the municipal road design.

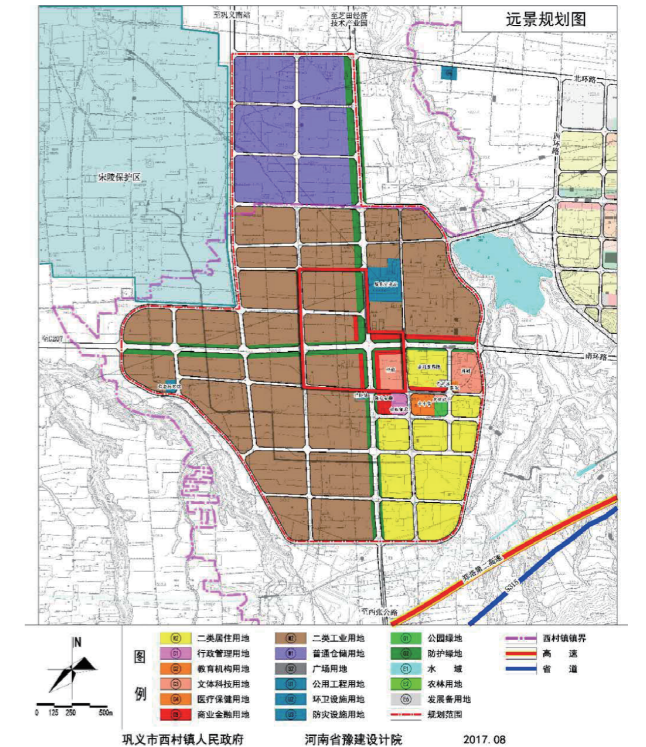


Infrastructure

The park has invested RMB 21.7 million. The overall planning, regulatory plan, R&D and environmental impact assessment of the park have been completed. At the same time, the 760.7-mu phase I appendants and boundaries have been checked and measured. The village maps, area confirmation and hearing notice confirmation have been completed and the buildings on the land acquired by the park have been relocated. In October, the preliminary work such as the measurement and site selection for power facilities was completed. The main roads in the park were all completed and other infrastructure construction is being advanced in an orderly manner. The first batch of 369-mu land in the park has been approved and will be conducted listing transfer by the Land and Resources Bureau. At present, many high-tech enterprises inside and outside Henan have come to the park for inspection and negotiation.



巩义市军民融合智能设备产业示范区总体规划 (2016—2030)



Scope of Invitation

Special robots, intelligent chip manufacturing, navigation intelligent equipment, new materials, new energy industry, advanced manufacturing, etc.

Contact

Feng Yinghao +86-13838199765



Dengfeng Industrial Cluster

Planning

The industrial cluster is one of the first batches of provincial industrial clusters in Henan Province. It is located in the eastern part of Dengfeng New Area, and at the intersections of three townships (towns) of Zhongyue Street Office, Ludian Town and Tangzhuang Township. It has a planned area of 9.7 square kilometers and a long-term planned area of 20.93 square kilometers. It is rated as Zhengzhou's "Five Fast Industrial Clusters" and the Henan Province's "Ten Fast Industrial Clusters".



Carrier Profile

Planning layout: the industrial cluster consists of six parks: the first is the automobile and equipment manufacturing industrial park with a planned area of 1.8 square kilometers. It is located in the western part of the cluster and is a built-up park. 15 enterprises have settled here, and nine of them have been put into production. The second is the biological and pharmaceutical industrial park. It is located in the control area with a planned area of 4.7 square kilometers. Five enterprises have settled here, and two of them have been put into trial operation. The third is the aluminum deep processing industrial park. It is located in the south of the North Ring Road in the eastern part of the development area, with a planned area of 1.63 square kilometers. 10 enterprises have settled here. The fourth is the home decoration industrial park. It is located in the north of the North Ring Road in the eastern part of the development area, with a planned area of 12.8 square kilometers, and is committed to building Zhengzhou's home decoration production base with a scale of RMB 100 billion. Among them, the starting area of the home decoration industrial park covers an area of 1.57 square kilometers. The fifth is the big data industrial park. It is located in the western area of the cluster, with a preliminary planned area of 1,000 mu. The sixth is the amorphous industrial park. It is located in the B area of the cluster, covering an area of 1,069 mu. The amorphous industry is a strategic emerging industry determined by the state. At present, Dengfeng has formed an amorphous industrial chain featuring new amorphous materials and power transformers. A number of influential enterprises around the country such as Henan Zhongyue Amorphous New Materials Co., Ltd. and Henan Longxiang Electric Co., Ltd. have emerged. The R&D system of the amorphous industry has taken shape initially, and targeted research on key amorphous technologies has been carried out in many fields. Relevant products have been under mass production. Some industries are in the domestic leading position and form a relatively complete industrial chain.

Infrastructure

A total of RMB 6.51 billion has been invested in infrastructure construction. At present, the infrastructure is basically in place. In 2015, nine infrastructure projects were implemented in the industrial cluster, with a planned total investment of RMB 550 million. Among them, the "two horizontal and one vertical" road projects in the control area, the innovation and entrepreneurship science park (phase I) and the 35KV central line relocation project in the control area have been completed. The tunnel project with a total length of about 800 meters and the power supply project for the standardized factories in the B area are also about to be completed.



Scope of Invitation

The leading industries are equipment and auto parts manufacturing, home decoration industry, biological and pharmaceutical industry as well as aluminum deep processing, big data and high-tech industries.

Contact

Yue Yapeng ☎ +86-371-62805829 ✉ dfcyjjq@163.com

Xingyang Industrial Cluster

Planning

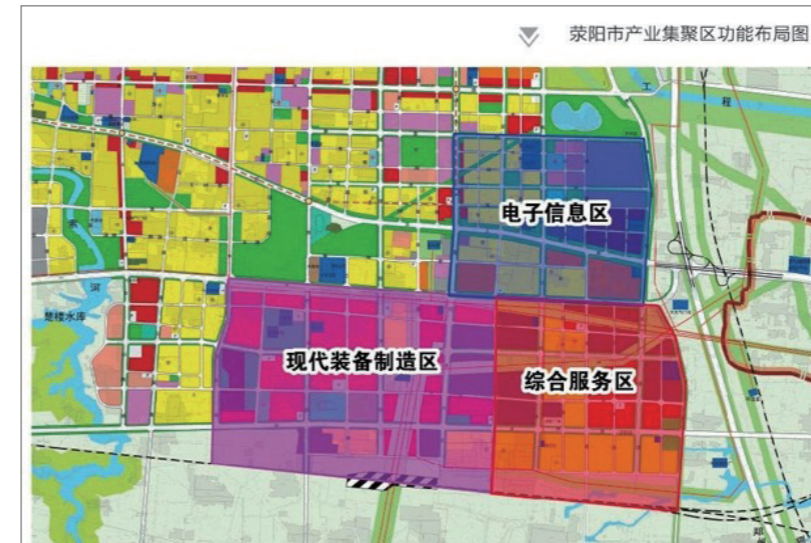
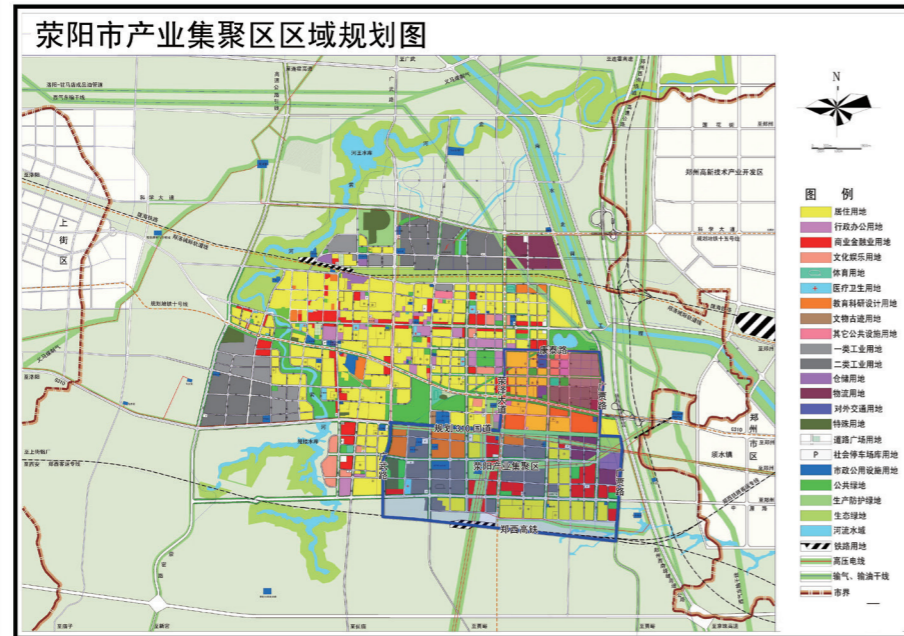
The industrial cluster is located in the southeast of Xingyang City Planning Area, with a planned area of 15.84 square kilometers, with Southwest Ring Expressway in the east, Zhengzhou-Xi'an High-speed Railway in the south, Guangwu Road South and Xingze Avenue in the west, and National Highway 310 and Kangtai Road in the north.

Carrier Profile

The leading industry in the industrial cluster is the modern equipment manufacturing industry led by Henan Shaolin Auto Co., Ltd., Zhengzhou Coal Mining Machinery (Group) Co., Ltd., Zhengzhou Sanhe Hydraulic Machinery Co., Ltd., Zhengzhou YiFan Machinery Co., Ltd., Henan Camelway Machinery Manufacture Co., Ltd., Zhengzhou Zhonglian Harvest Machinery Co., Ltd. and other enterprises. The industrial cluster has formed a development chain of casting, parts production, equipment R&D and equipment production around the leading industry according to the idea of "highlighting characteristics and developing chains".

Infrastructure

The industrial cluster uses the investment and financing platform to finance RMB 53 million in BT (Build-Transfer) mode to repair 3.5 kilometers of roads, RMB 70 million in BOT (Build-Operate-Transfer) mode to build the second Sewage Treatment Plant in Xingyang City with the daily treatment capacity of 20,000 tons, and RMB 320 million to build Xingyang Tanshan Thermal Power Co., Ltd.



Scope of Invitation

Equipment manufacturing and electronic information industry.

Contact

Li Ke ☎ +86-371-64971153 ✉ xyjjqzs@163.com



Xinmi Industrial Cluster

Planning

The planned area of the industrial cluster is 13.35 square kilometers, and its leading industries are brand clothing and equipment manufacturing. It is 14 kilometers away from the central city of Zhengzhou in the north, and 15 kilometers away from the Zhengzhou Airport Economy Zone in the east, with a built-up area of 6.2 square kilometers. It enjoys unique geographical advantages. The Zhengyao Expressway and Shangqiu-Dengfeng Expressway runs through the north and south, linking the east and west, and Zhengzhou University South Road fast track, Provincial Highway 317 Yingbin Avenue section, Provincial Highway 321, Xingang Avenue, Zhengzhou Metro Line 7, Zhengzhou-Dengfeng-Luoyang Intercity Railway integrates to form a network. The industrial cluster integrates with Xinmi New District's starting area, and is awarded as "Henan Province's two-star industrial cluster", "Henan Province's Ten Fast Industrial Clusters", Henan Province's top 30 industrial clusters with the scale of RMB 10 billion, and "Zhengzhou's top two industrial clusters". It is also the core area of Xinmi's innovation and entrepreneurship experimental area and the strategic highland for promoting the development of emerging industries.

Carrier Profile

The industrial cluster takes brand clothing and equipment manufacturing as the leading industries, and aims to build itself into an "advanced manufacturing base, brand clothing capital and ecological new city where people enjoy living and working". Based on the advantages of industrial foundation, it will follow the laws of industrial evolution, take brand clothing and equipment manufacturing as the leading industries, take smart home and green building materials as emerging strategic industries, and introduce and cultivate a large number of high-growth projects such as Henan Kangningte Environmental Protection Technology Co., Ltd., Zhengzhou ANNEC Industrial Co., Ltd., Jinrong Clothing Creative Park, Tongying Enterprise Headquarters Port, Weizhong Group, China Construction Seventh Engineering Division Corp. Ltd., GLP and Yabao Wood Industry Co., Ltd. to attract upstream and downstream enterprises for cooperation so as to enhance industrial influence and competitiveness. It has one enterprise with an annual revenue of more than RMB 1 billion, 10 enterprises with an annual revenue of more than RMB 100 million, and 68 enterprises above designated size. So far, more than 190



projects have been signed, with a total investment of about RMB 300 billion. There are more than 70 key investment projects with a total investment of RMB 218 billion. Among them, there are eight investment projects for top 500 domestic and foreign enterprises, 12 top 10 investment projects in the industry, 15 investment projects for listed enterprises and five foreign investment enterprises. The industrial cluster has formed the modern circular industry system integrating the three major clusters of "air treatment equipment, water treatment equipment and solid treatment equipment" based on the overall planning of "three zones and three parks" (Northeast and Southwest Urban Economic Zone, Zhen River Ecological and Cultural Tourism Economic Zone, North and South Agriculture and Forestry Economic Zone; Equipment Manufacturing Industrial Park, Brand Clothing Industrial Park, And Energy Conservation and Environmental Protection Demonstration Industrial Park) of Xinmi New District. The clothing industry has formed a complete horizontal industrial chain integrating "R&D design, brand processing, trade display, e-commerce, logistics and distribution, and service outsourcing". An ecological livable new city of "environmental protection equipment base and brand clothing capital" has taken shape at first. At present, it centers on the strategic development goal of "integrating into Zhengzhou, connecting airports, innovation-driven development and continuous transformation" to actively promote the industry-city interactive development and functional integration, continuously strengthen the innovation-driven and sustainable development capability, and build the industrial cluster into a bridgehead of "integrating into Zhengzhou and connecting airports" and a "best area" for all kinds of work.

Scope of Invitation

Brand clothing, equipment manufacturing, technological innovation, e-commerce, etc.

Contact

Hao Junfeng ☎ +86-371-63191002 📱 +86-15838120258 ✉ xmxqzsk@163.com

Infrastructure

According to the principle of overall planning, appropriate advance and step-by-step implementation, we will further increase investment and speed up the construction of infrastructure and supporting service facilities such as water, electricity, gas, heating and communications. The "nine vertical and ten horizontal" (19) roads, including Gongxin Avenue, Zhenwei Street, Huayuan Street, Laodong Street and Gaowa Street, with a length of 60 kilometers, facilitate access to the industrial cluster. The 110KV Xifeng Substation and the sewage treatment plant with a daily treatment capacity of 15,000 tons have been completed and put into operation. The heat supply network diverting heat into Zhengzhou has been completed, and the phase II West-East natural gas pipelines provides full coverage. The "six comprehensive service platforms" will soon be put into operation. The construction of the Zhen River ecological water system landscape project is being stepped up. At present, about RMB 2.6 billion has been invested in the construction of the infrastructure which is being improved, and the ecological environment advantages are becoming increasingly obvious. At present, there are four high-tech enterprises with an output value of RMB 760 million in the industrial cluster.

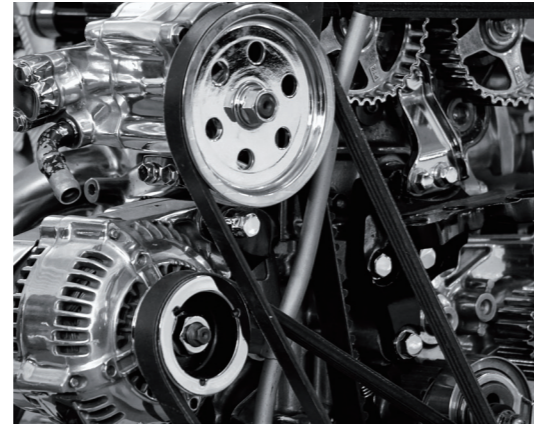
It has 13 science and technology enterprises in Henan Province, 13 science and technology enterprises in Zhengzhou City and 34 science and technology enterprises that have been identified as backup candidates for cultivation. There are 14 high-level talent teams, of which two have entered "Pooling Talent to Zhengzhou• 1125 Talent Introduction Plan". Dozens of scientific and technological R&D teams are carrying out industry-university-research cooperation with companies such as Henan Kangningte Environmental Protection Technology Co., Ltd., Zhendong Technology, Yuzhong Energy, Xinmi Wanli Industry Development Co., Ltd., Kupai 3D and China Construction Science and Technology Group.



Zhongmu Automobile Industrial Cluster

Planning

The industrial cluster is a provincial industrial cluster in Henan Province, with a total planned area of 139.6 square kilometers. The leading industries include vehicle manufacturing, parts production and automobile aftermarket.

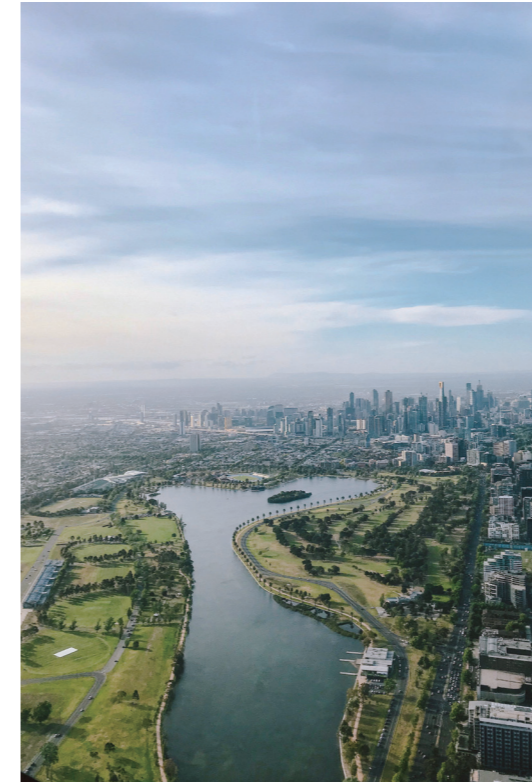


Carrier Profile

Nine vehicle enterprises such as Zhengzhou Nissan Automobile Co., Ltd., Haima New Energy Vehicle Co., Ltd. and Zhengzhou Hongyu Special Automobile Co. Ltd., as well as more than 400 spare parts production and service enterprises such as Zhengzhou BAK Battery Co., Ltd. and China Chang'an Automotive Group Co., Ltd. Zhengzhou Qingshan Transmission Branch, have settled in the industrial cluster. It has formed a whole automobile industrial chain integrating research, production and sales. At present, the industrial cluster is a national new-type industrial demonstration base, Henan Province's top ten industrial clusters in 2014, Henan Province's two-star industrial cluster, Henan Province's high-tech industrial development zone, Henan Province's two-level integration experimental area, Henan Province's key industrial cluster, Zhengzhou's top two industrial clusters in 2013, 2015 and 2016, Zhengzhou's top five industrial clusters in 2012, Zhengzhou's five fast industrial clusters in 2011, and Zhengzhou's innovative industrial cluster. It has entered the Catalogue of China's Development Zones the Approval of Which is Announced (2018 Version).

Infrastructure

The industrial cluster has planned a blueprint for urban-rural integration around the development direction of "simplification of five regulations and measures and industry-city integration". The planning and construction of new rural communities have gone smoothly. It plans and builds "one lake and three rivers" ecological water system, greenway and parks, making the industrial cluster and people here surrounded by green. The supporting facilities are perfect: the framework of the main road network is basically formed, the water, electricity and gas networks are integrated, and the supporting service facilities such as education, commerce and finance are all available.



Scope of Invitation

We will broaden our vision and the scope of invitation, conduct in-depth research on the development trend of emerging industries at home and abroad and the development orientation of national industrial policies, adjust the proportion of leading industries, accelerate the development of a new generation of information technology, new energy, new materials, energy conservation and environmental protection industries, and form a diversified investment pattern while attracting investment for the traditional automobile industry.

Contact

Zhang Shengwei

+86-371-69681665

+86-15981865213

Gongyi Refractory Materials Industrial Cluster

Planning

The Refractory Materials Industrial Cluster is located in Beishankou Town, Gongyi City, between Zhengzhou and Luoyang. With Provincial Highway S237 passing through, it is adjacent to Lianyungang-Khorgas Expressway and Gongyi-Dengfeng Expressway. The planning scope is from the south of National Highway 310 to the north of Huanqu Road South. Along both sides of Provincial Highway S237, it reaches Huanqu Road in the west and Fengling Road in the east. The built-up area spans 2.8 square kilometers and the total planned area covers 6.1 square kilometers.



Carrier Profile

The refractory materials industry is the pillar industry, advantageous industry and characteristic industry of Gongyi City, and enjoys a strong industrial base. Gongyi Municipal Party Committee and Municipal Government attach great importance to the further development of the refractory industry, including it in the municipal government's industrial development plan. The sales of refractory products in the industrial cluster account for one tenth of the national refractory market. The refractory production capacity can meet all the demands of iron and steel enterprises and the high-temperature materials required for ceramic, glass and cement compact furnaces. The following are the leading products of the industrial cluster. There are shaped products, including various shaped refractory bricks for smelting such as iron smelting furnace, steel smelting furnace, iron mixing furnace, blast furnace, hot blast furnace, converter and ladle; alumina bricks for blast furnace, magnesia carbon bricks, alumina carbon bricks, silicon bricks, corundum silica bricks, plastic corundum composite bricks, carbon composite bricks, recrystallized silicon carbide bricks, silicon dioxide bonded silicon carbide bricks, and non-burning prefabricated refractory brick. The park's leading products also include unshaped products, such as blast furnace large module castable, corundum castable, high-strength lightweight castable, carbon non-hydraulic slurry, no water pressure for charging expanded mud, paint spraying for shell of hot blast stove, high aluminum-spinel steel castable, low cement series castable, high-strength mullite matrix castable, special refractory mud, thermal insulation and anti-seepage materials for aluminum industry, BFS-II and large prefabricated aluminum electrolytic cell. At present, the total assets of the

enterprises in the built-up area reach RMB 2.8 billion, with 64 enterprises including three of the top 30 enterprises in Gongyi, and 28 large-scale enterprises. There are more than 6500 employees and 280 technicians. These enterprises have successively established technical cooperation with scientific research institutes, such as Wuhan University of Science and Technology, Sinosteel Luoyang Institute of Refractories Research Co., Ltd, University of Science and Technology Beijing, and Beijing Institute of Architectural Design. In 2016, these enterprises won the title of Henan Province SME Characteristic Industrial (Refractory Materials) Cluster.



Scope of Invitation

High-end refractory and new materials

Contact

Zhao Taixuan ☎ +86-18638932288

Infrastructure

In recent years, the local government has invested more than RMB 150 million to continuously improve the infrastructure of the industrial cluster. It has completed the construction of 8.2 kilometers of five vertical and one horizontal road, built a new substation and two 1000-cubic-meter reservoirs as well as drilled a well. Gas substations and pipelines have been put into use. The network communication has been upgraded and the afforestation area has reached 10,000 square meters. In general, the industrial cluster provides an access to an already well-established infrastructure.



Longhu Financial Island Outer Ring

Planning

The project is situated in Longhu Financial Island, Zhengdong New District. It consists of 22 skyscrapers with a height of 100 meters, with a total floor area of 2.7 million square meters and a total investment of about RMB 37 billion. It is mainly planned to build headquarters and regional headquarters of various financial institutions and high-star hotels.

Carrier Profile

Longhu Financial Island dedicates itself to being the main carrier of the future construction of an international regional financial center in Zhengdong New District. The financial office buildings, urban ecological landscape and cultural buildings were all designed by best teams who stood out from the international bidders. The design of all single buildings was delivered in a very high standard by the top architects at home and abroad. These buildings met China's green building standard and earned LEED Gold certification. Zhengdong New District Administrative Committee is in charge of the Longhu Financial Center to ensure the unity in constructing, improve the utilization rate of public facilities, and keep the project on track. Leveraging the advanced experience at home and abroad, Zhengdong New District Administrative Committee adopts an innovative mode of unified development and construction to develop standardized financial buildings to meet the demands of the financial industry.



Infrastructure

At present, water injection has been completed in Longhu, and the construction of road and underground pipelines of Longhu Financial Island have been basically finished. The project has been started since 2018 and is expected to be completed in 2020. At that time, Longhu Financial Center will become a new regional center with a sound financial system, various financial forms and perfect infrastructure. It will integrate business, leisure, culture, catering and entertainment. The popularity and influence of the financial cluster in Zhengdong New District will be further increased, boosting the development of the international financial center and the international central business district.



Scope of Invitation

Only businesses conforming to the industries specified in the Interim Measures for the Development of Key Industries in Zhengdong New District are allowed to settle in the Longhu Financial Island. (Including: banking financial institutions, securities companies, futures companies and their branches, securities investment fund management companies, equity financing and trading service agencies, equity financing and transaction services agencies, subsidiaries of securities companies, insurance companies and their branches, insurance intermediary service agencies, insurance asset management companies and their branches, third-party payment agencies, financial leasing companies, financial service outsourcing companies, financial intermediary service agencies, venture capital funds and private equity companies, auto finance companies, consumer finance companies, small loan companies, financial holding companies (groups), financial supervision and management institutions, factor trading service providers (except those engaged in physical transactions such as vehicles and real estate), and professional financial information service providers.

Contact

Wang Shuo ☎ +86-371-67179750 ✉ zjrfwj@163.com



Jindai Industrial Cluster, Zhengzhou City

■ Planning

The industrial cluster is located in the southeast of Zhengzhou City. It was established in 2003 with an original planned area of 11.42 square kilometers. It spans two township offices, namely Nancao and Shibalihe, in Guancheng District of Zhengzhou City. Its actual jurisdiction covers the south of the 3rd Ring Road, east of the Zichen Road, north of the 4th Ring Road and west of the Jindai Road, with a total area of 5 square kilometers. It is one of the 24 urban development core areas in Zhengzhou

The functional orientation of Jindai District: forming a headquarters economic industrial system dominated by science and technology, R&D, construction survey and design, etc.



■ Carrier Profile

Committed to planning guidance, foundation first, industry-city integration, cluster development, the industrial cluster gradually improved its infrastructure and optimized its industrial structure. Situated in the joint development area of the main urban area and the aviation city, it is surrounded by a large number of manufacturing and trade enterprises, conducive to forming a headquarters economic industrial system and manufacturing base functional chain dominated by science and technology, R&D, construction survey and design, etc.

■ Infrastructure

The industrial cluster is sandwiched between the central urban area of Zhengzhou and the new urban area. It provides convenient access to the National Zhengzhou Economic and Technological Development Zone in the east and Zhengzhou Airport Economic Zone in the south. It is close to the South 3rd Ring Road, Zhongzhou Avenue and airport expressway. In the cluster, the roads including Wenxing Road, Wenzhi Road, Wende Road, Dingrui Street, Dingcheng Street, Dingshang Street and Dingsheng Street radiate in all directions. The overall road network within the cluster has been formed, and the main road network presents a "six vertical and ten horizontal" pattern. The total mileage of the planned roads is 35 kilometers. The total mileage of the current roads reaches 18 kilometers, connecting the central urban area with the Zhengzhou Airport Economic Zone. Metro line 2 along Zijingshan Road South and Metro Line 5 along Hanghai Road have been put into use. The stations of Metro Line 4 along Jindai Road are under construction and are scheduled to start operation in October 2020. Jindai Industrial Cluster has invested RMB 22.6 million to build a domestic waste comprehensive treatment plant, which can compress and transport 600 tons of domestic waste every day. In the industrial cluster, the greening area totals 400,000 square meters and natural gas pipelines are laid for about 30 kilometers. There are 2.26 million square meters of standardized factory buildings. There was the first 110KV digital substation in Henan Province, providing "accesses to seven public utilities and site leveling".

■ Scope of Invitation

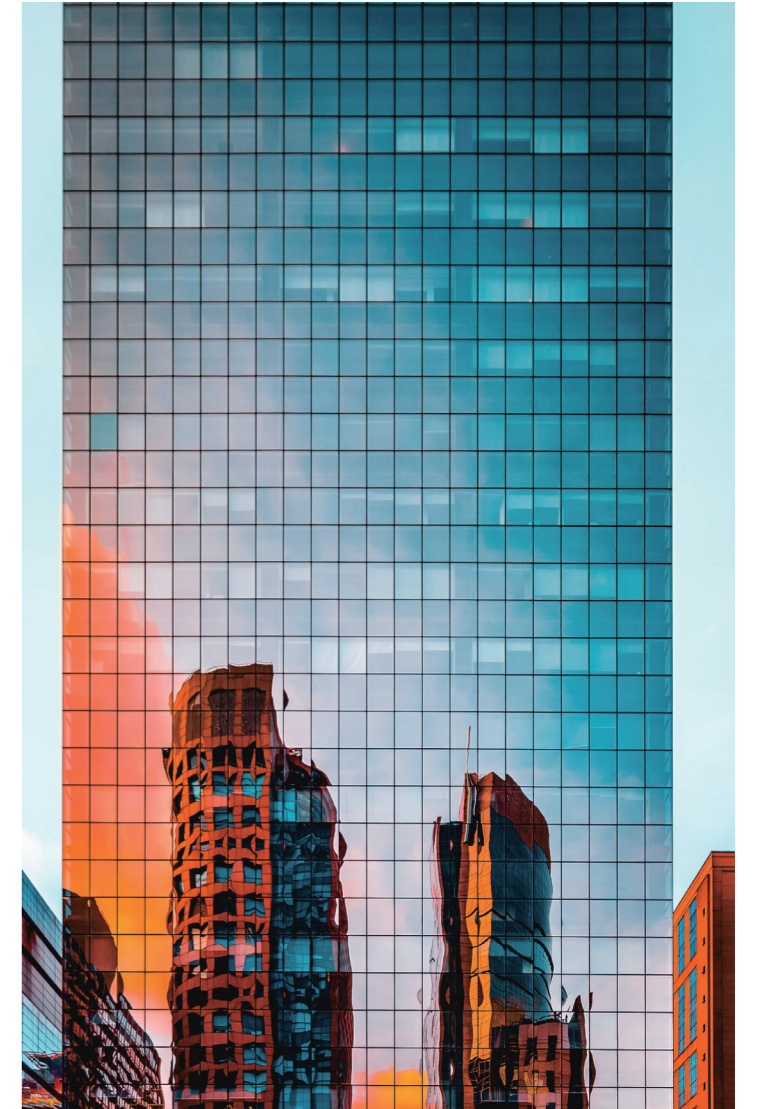
High-end commerce and trade, science and technology, R&D, and construction survey and design headquarters.

■ Contact

Tie Mengyao

☎ +86-13140110271

✉ gczs2009@163.com



Zhengzhou Jinshui Science & Education Park

Planning

The park is located in the northeast of Zhengzhou, with a planned area of 56 square kilometers. It is four kilometers away from Longhu Island, the financial center of Zhengdong New District, and Longzihu University Park, and eight kilometers away from the Zhengzhou East Railway Station. It takes 30 minutes to reach Xinzheng International Airport and the Zhengzhou Xinzheng Comprehensive Bonded Zone. Within the park, high-grade highways, such as Zhongzhou Avenue, 107 Auxiliary Roads, Beijing-Hong Kong-Macao Expressway, Lianyungang-Khorgas Expressway and East and North Fourth Ring Road crisscross to form a convenient transportation network.

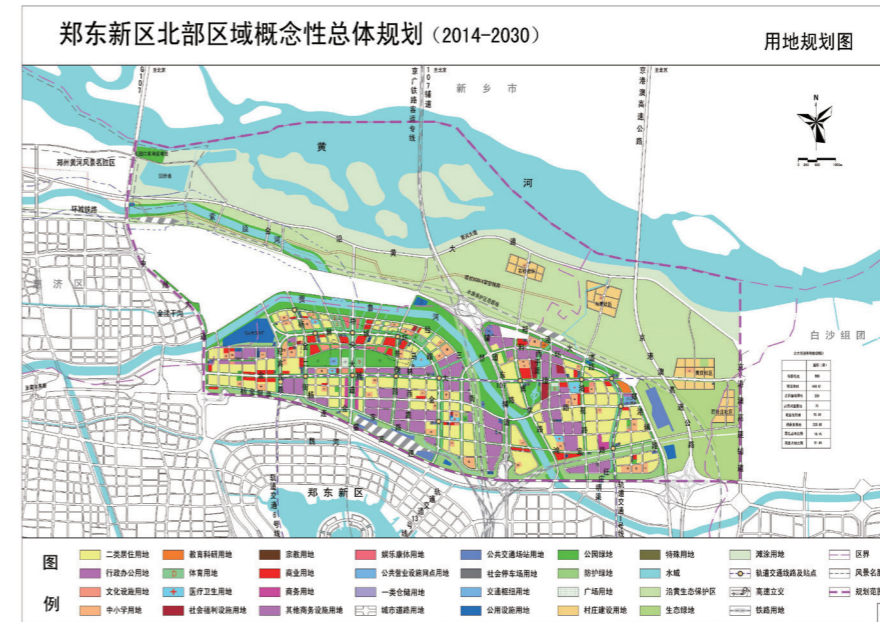


Carrier Profile

Jinshui Science & Education Park, the first to be positioned as “Central Plains Wisdom Core + Zhengzhou Eco-city” in the Central Plains area, adheres to the overall development idea of “one zone leading, double linkage, three aims, and four-chain integration”. Striving to build a national-level high-tech zone, it actively explores the “double linkage” development mechanism of free trade zone and independent innovation zone to internalize the innovation and entrepreneurship, facilitate investment and trade, and construct a modernized park. Efforts have been made to integrate the development of the capital, talent and industry. By now, the park has successfully been bestowed the following titles, including Provincial-Level High-Tech Industrial Development Zone, Regional Innovation and Entrepreneurship Base in Henan Province, Science and Technology Service Industry Demonstration Base in Henan Province, First Batch of Service Outsourcing Demonstration Park in Henan Province, and Demonstration Base of Information Security Industry at the city and provincial level.

Infrastructure

The park has been able to offer full range of services required for industrial operations, such as transportation, electricity, communication as well as water supply and drainage infrastructure. Furthermore, efforts have been made to improve public service facilities such as education, medical treatment, sports, culture and life.

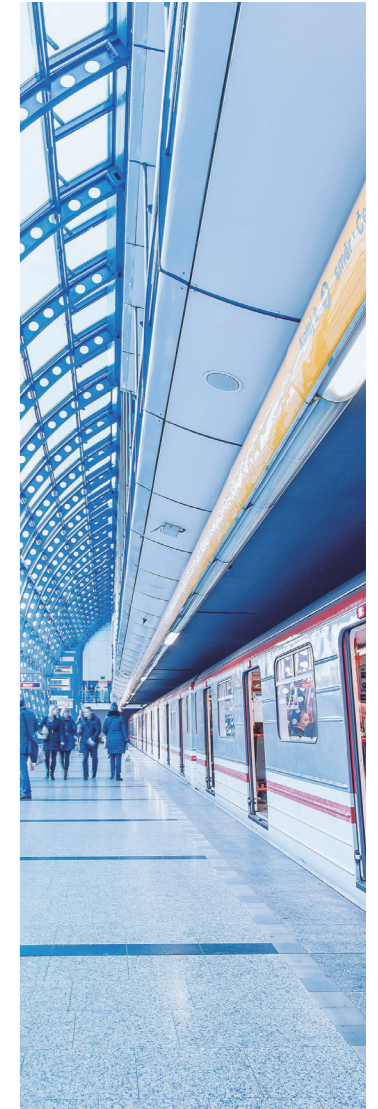


Scope of Invitation

High-tech service enterprises

Contact

Niu Baowei ☎ +86-371-65553159 ✉ yjqzsb@126.com



National Intellectual Property Pilot Creative Industry Park

Planning

With Guoji Road as the central axis, the industry park starts from Zhongzhou Avenue in the east and reaches Jinbei Road in the west, with a depth of 500 meters in the south and north, and an area of about seven square kilometers. It stretches from Malin Road in the west, to Jingsan Street in the east, with Jinbao Branch Road in the south, and Jincheng Avenue in the north. With 107 Auxiliary Road in the west, Jialu River in the east and north and Lianyungang-Khorgas Expressway in the south, it spans an area of 2.6 square kilometers. Thus, the total planned area totals about 9.6 square kilometers.

Carrier Profile

The park is the only one national intellectual property pilot creative industry park in China approved by the National Intellectual Property Administration in October 2011 and constructed by the Jinshui District People's Government. The park gives priority to the creation, protection and application of intellectual property rights. Guided by the intellectual property economy, it takes intellectual property services, industrial design, software R&D, and cultural and creative industries as its core. It adheres to the combination of intellectual property rights and industrial design, industrial design and entities, market orientation and government regulation, project promotion and overall advancement as well as patent operation and capital operation. Such efforts were to form a design creative industry chain covering front-end development design, middle-end production and processing and back-end sales agency, so as to boost industrial agglomeration and enhance the competitiveness of the park. The park has housed



a number of national platforms, such as China Zhengzhou (Creative Industry) IPR Rapid Aid Center, the Ninth Circuit Court of the National Intellectual Property Administration Review Board, and the National Intellectual Property Original Certification and Protection Center. World-famous enterprises, such as Langjian Industrial Design and Baidu Cloud, have settled in the park, enabling the park to be a domestic intellectual property-led creative industry highland with an annual output value of over RMB 100 million. Striving to develop the leading industries, the park has built a comprehensive infrastructure ecosystem.

As a pillar to support for economic restructuring and industrial transformation and upgrading in Jinshui District, the park has been committed to "bold exploration and trial first", which is upheld by the China National Intellectual Property Administration. It has seized the strategic opportunities of establishing Henan Pilot Free Trade Zone and Zhengzhou-Luoyang-Xinxiang National Independent Innovation Demonstration Zone. The park also has exploited China's development strategies for "building a national central city" to grow itself as Zhengzhou was added to the list of the National Central Cities. Aiming at developing platforms, offering sound policies, boosting the enterprises and industries, the Jinshui District spares no efforts to advance a number of key projects, such as the central intellectual property operation center. The Jinshui District is gradually transforming advantages of policy, platform and carrier into industrial cluster advantages, and is striving to build the park into a pilot area leading industrial development and a national intellectual property creative industry demonstration zone.

Infrastructure

The park has invested nearly RMB 300 million to build two buildings, namely Building A and Building B, with a floor area of 50,000 square meters. In the park, there are a great number of platforms, including China Zhengzhou (Creative Industry) IPR Rapid Aid Center, Zhengzhou Original Certification and Protection Center (Creative IP), Intellectual Property Operation and Incubation Platform, Key Industry Intellectual Property Operation Fund in Henan Province, Collaborative Innovation and Intelligence Introduction Platform, Enterprises, Universities and Research Institutes Cooperation Center, Online Park, Pilot R&D Transformation Platform, Creative Achievement Exhibition Hall, Jinshui District Library Creative Design Branch, Integrated Administrative Public Service Center. These platforms aim to provide enterprises with intellectual property services, financial services, talent services, online services, on-line services, technological services and public services.



Scope of Invitation

Intellectual property services, industrial design, software R&D, cultural creativity

Contact

Li Qianwen

+86-371-56577119

+86-371-56577116

cycyy2012@163.com

Scientific Research and Design Park

Planning

The Scientific Research and Design Park is located in the north of Zhongyuan Road East, east of Changzhou Road and west of Qunan Road. It is planned to cover an area of 302 mu with a floor area ratio of 2.0-4.0 and a height limit of 80-100 meters. It is expected to introduce 6-8 leading technology enterprises into the park.



Carrier Profile

At present, the park has housed SIPPR Engineering Group Co., Ltd and Central Plains Environment Protection Co., Ltd. It plans to introduce 6-8 Grade A design institutes within 2-3 years, with the main business income of the park reaching RMB 8-10 billion.



Infrastructure

The Zhongyuan New District Administrative Committee is responsible for completing the detailed construction planning for the park and making plans to start the construction of infrastructure in the park.



Scope of Invitation

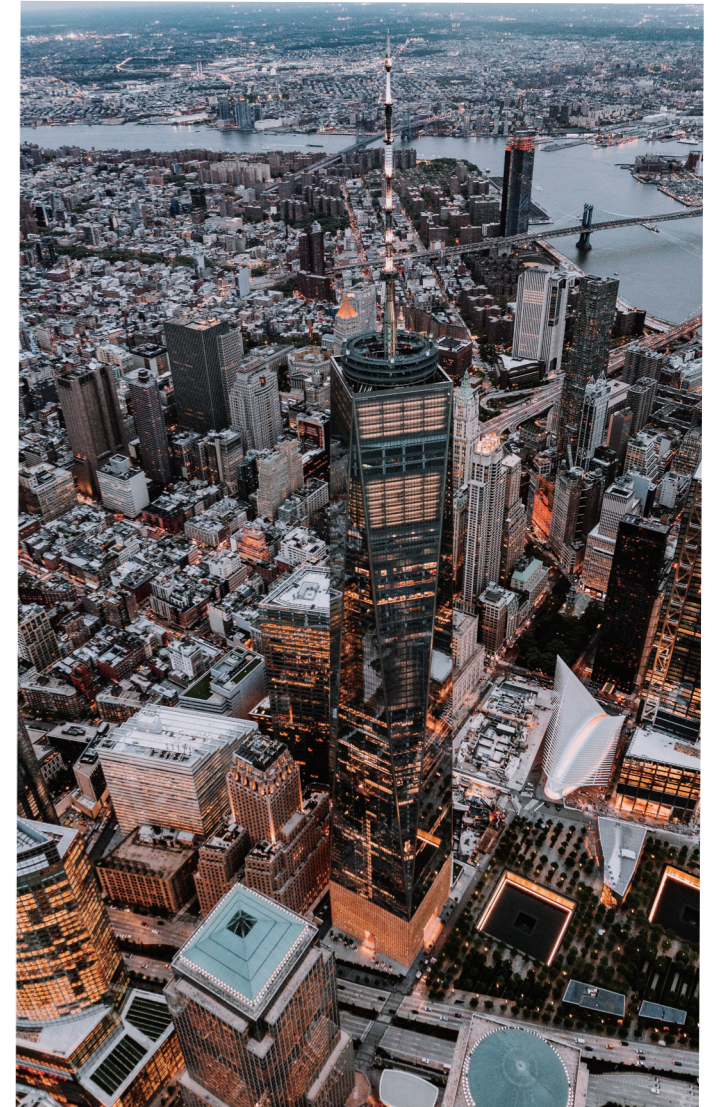
Grade A Design Institutes

Contact

Yang Ke

+86-371-67610879

zhaoshang2@163.com





Jinshui Block in Zhengzhou Area of China (Henan) Pilot Free Trade Zone

Planning

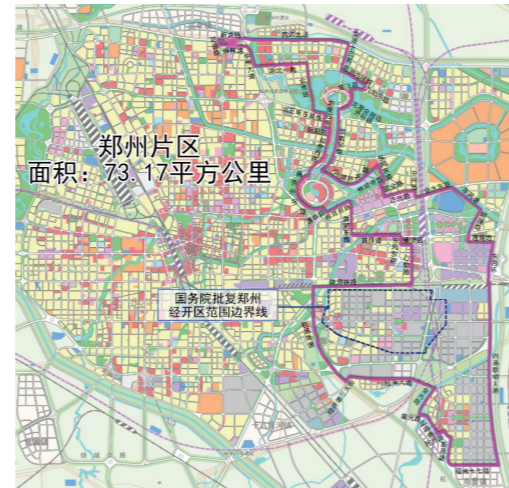
Jinshui Block is suited in the enclosed area of Huayuan Road North, Liulin Road East, Xinlong Road and Zhongzhou Avenue, with a planned area of 0.28 square kilometers. It boasts a sound infrastructure, suitable for businesses operation. Four large-scale urban village renovation projects are currently being implemented in the northern and western areas of Jinshui Block. Ten primary and secondary schools with a total area of about 479.4 mu are newly planned, providing access to education to children of office workers, who are migrants. There are 16 commercial sites with a total area of 542.71 mu, which can effectively meet the demand of office space and commercial supporting facilities. Meanwhile, the renovation project of the four urban villages is expected to offer a total of nearly 200,000 square meters of medium and high-end residential buildings in the next 3-5 years, which can meet the residential needs of talents. In addition, these residential buildings are only a block away from Jinshui Science & Education Park and Longhu CBD Center in Zhengdong New District. It will complement modern service industries, such as financial services and high-tech services of Science & Education Park, in terms of industrial layout to create a complete industrial ecology.

Carrier Profile

China (Henan) Pilot Free Trade Zone, approved by the State Council, was set up to test the effectiveness of the policies in the fields of investment, trade, finance and other fields as well as to innovate administrative methods. At present, the State Council has approved the establishment of 18 free trade zones. On August 31, 2016, the State Council released the third batch of seven pilot free trade zones, including Henan province. On April 1, 2017, the China (Henan) Pilot Free Trade Zone was launched

China (Henan) Pilot Free Trade Zone covers a total area of 119.77 square kilometers, including 73.17 square kilometers in Zhengzhou, 19.94 square kilometers in Kaifeng and 26.66 square kilometers in Luoyang. It will become a modern comprehensive transportation hub, an all-round reform and opening-up pilot area and an inland open economy demonstration zone to serve the Belt and Road Initiative.

Zhengzhou Area of China (Henan) Pilot Free Trade Zone has a total area of 73.17 square kilometers, including 41.22 square kilometers in Zhengzhou Economic and Technological Development Zone Block, 31.67 square kilometers in Zhengdong Block and 0.28 square kilometers in Jinshui Block. It will be a high-standard free trade zone which enjoys facilitated investment and trade, convenient



transportation and logistics, agglomerated high-end industries, efficient supervision, law-based environment and remarkable radiation and driving effects, advancing the transformation and development of inland economy

Being successfully incorporated into China (Henan) Pilot Free Trade Zone and Zhengzhou-Luoyang-Xinxiang National Independent Innovation Demonstration Zone, Jinshui District becomes the first and only administrative district in China to implement two national strategies.



Infrastructure

Currently, the overall removal of the project has been cleared; the overall planning of the block and the conceptual design scheme have been completed in the first draft; the high-voltage line ground entry project above the land lot is speeding up; the work of land, planning, hydrological survey and geological exploration has been carried out in an orderly manner. In summary, the basic conditions for the overall development of the project have been ripe.

Scope of Invitation

Give full play to the advantages of opening-up and innovation in the pilot FTZ, aim at high-end service industries and emerging industries, and build a diversified and multi-level industrial ecosystem with headquarters economy as the core, emerging financial services and international trade as the main features, Internet technology as the guide, and international business services as the supporting support.

Contact

Liu Jing ☎ +86-371-63526030 ✉ jsqzmb@163.com



Central Plains Headquarters Base

Planning

The project is located in the south of the East Square of the Zhengzhou East Railway Station in Zhengdong New District of Zhengzhou City and at the southwest corner of Shangding Road and Boxue Road. The project covers an area of 134,000 square meters (about 198.2 mu), with a total planned construction area of 1.167 million square meters, 759,000 square meters on the ground and 408,000 square meters underground.



Carrier Profile

The project is designed to build 585,800 square meters of office buildings, 91,900 square meters of commercial buildings and 25,900 square meters of service apartments. It also plans to introduce the world-known service apartment brand Ascott The Residence. At present, the foundation construction of the project has already started. It is expected that the delivery is due in three years, with an area of about 300,000 square meters for investment.

Infrastructure

Many first-tier teams of the world such as Colliers International, Architects Crang & Boake Inc. (ACBI), and Japan's Domo Commercial Design have been invited to build the project. It is planned that the project will be built with Super Grade A office buildings and customized Grade A office buildings and provided with three-dimensional atrium business gardens, international service apartments, high-end administrative apartments, conference and exhibition centers, urban green square and other related business facilities based on the office and living needs of the business people. In the future, it will be built into a garden-like headquarters business community, boasting leading concepts, environmental awareness and high quality and aim to create a highly coordinated and unified headquarters business park with strong cultural characteristics of central plains so as to represent the business image of central plains and help boost the economy of central plains. Meanwhile, many well-known financial institutions, multinational companies, Fortune Global 500 enterprises and other leading enterprises with large scale and high amount of tax payment, as well as leading enterprises in the region of central plains, will be invited to create a window platform for the region of central plains to connect with leading enterprises in the world.



Scope of Invitation

It's planned that the headquarters and regional headquarters of Fortune Global 500 enterprises, Top 500 Enterprises of China, well-known multinational companies, well-known financial institutions and high-end business trade services, as well as some scientific research institutions and sales headquarters and settlement centers of key enterprises will be brought into the commercial and office buildings.

Contact

Wu Hongliang ☎ +86-371-67179822 📱 +86-13526811789 ✉ jfjswgz@126.com





Henan Animation Industry Science and Technology Business Incubator

Planning

The incubator is located in the Zhongyuan Advertising Industry Park at the intersection of Kexue Avenue and West 3rd Ring Road. It has a total investment of RMB 1.2 billion and covers an area of 88 mu and a construction area of 240,000 square meters including the animation business incubator, animation R&D center, animation public technical service platform and animation education and training center.



Carrier Profile

Located in Zhongyuan Advertising Industry Park, the incubator is a cultural and creative industrial cluster with advertising, animation, games, Internet, film and television and e-commerce as its leading industries. In December 2017, it was recognized as a "State-Level Technology Incubator" by the Ministry of Science and Technology of the People's Republic of China, a "National Advertising Industry Park" recognized by the State Administration for Industry and Commerce of the People's Republic of China and a national animation base (Henan-based) approved by the National Press and Publication Administration. Up to now, there are 56 incubating enterprises and 894 employees, with 47 such cultural and creative enterprises as enterprises in animation, games and the Internet accounting for 84%. There are 24 incubated enterprises, two NEEQ companies and eight high-tech enterprises.



Scope of Invitation

Advertising, animation, games, Internet, film and television, e-commerce, etc.

Contact

Liu Meijuan ☎ +86-371-67989228 📱 +86-15036181260 ✉ zzggy@vip.163.com



Zhengzhou International Cultural & Creative Industry Park

■ Planning

Zhengzhou International Cultural & Creative Industry Park is located at the core of Zhengzhou-Kaifeng Industrial Belt. It starts from Wansan Highway in the west and reaches Guandu Road West in the east, Lianyungang-Khorgas Expressway in the north and Jialu River in the south, with a total planned area of 132 square kilometers. Based on integrated functional elements such as "industrial layout, urban space, road traffic, ecological water system and green landscape", the park has solicited planning schemes twice across the globe and selected the best from many world-renowned design institutions such as AECOM from the United States, Arup from the UK and Shanghai Tongji Urban Planning & Design Institute Co., Ltd.; it has conducted a systematic analysis of value chain, resource matching and industrial clusters. Guided by industries, the park interacts with the city and extends along points and axes in parallel to form a spatial pattern of "weaving five corridors in one park, connecting two districts with one belt, gathering one core in one ring, and building two centers along two axes".

■ Carrier Profile

Firmly sticking to the core idea of "taking industrial projects as the lifeline" and based on the three major leading industries of "culture and creativity, fashion and tourism as well as high-end business", the park will pursue a development pattern of "being affected by large theme parks, linked by pan-entertainment and cultural performance, driven by leisure and shopping spots, centered on characteristic professional parks and supported by conferences and exhibitions for development of economy". It aims to build a world-class tourist destination with 50 million visits and "the City of Theme Parks in Asia".

Affected by large theme parks: six theme parks, i.e. LEGOLAND theme park, Fantawild Holiday Resort, Jianye Huayi Brothers Movie Town, Haichang Ocean Park, Wang Chaoge's drama park project themed by "The Only Henan" and Holland Ice-World, are concentrated, and three of the world's Top Ten Theme Parks have settled in.

Linked by pan-entertainment and cultural performance: The Mahua Fun Age Theater, Broadway Family Culture and Entertainment



Center, Pan-entertainment Animation and Esports Park, Great Wall Painting and Calligraphy City, Henan Song and Dance Theater, Henan Peking Opera Theater (currently known as Henan Peking Opera Arts Center) and other pan-entertainment cultural performance projects have settled in the park.

Driven by leisure and shopping spots: Shanshan Outlet Plaza, Haining Leather City, Aegean Place, "the Belt and Road" Initiative Leisure and Shopping Gourmet City, Country Garden Commercial Plaza, J18 and other leisure and shopping projects are concentrated in the park, with Shanshan Outlet Plaza leading the industry with an operating revenue of RMB 1.62 billion in 2018.

Centered on characteristic professional parks: Seven featured professional parks, namely, Central Design City, the Central China National Digital Publishing Base, the Headquarters Base of China Mobile in Central China, the Zhengzhou Teaching and Research Base of School of Economics, Peking University, the D'modes Fashion Design Center, Romantic Wedding Manor and Xiyuan Opera Arts Center are planned and laid out to create diversified and inclusive industrial carriers.

Supported by conferences and exhibitions for development of economy: Full efforts have been made to build Yanming Lake International Conference and Exhibition Town which will serve as the largest international conference and exhibition center in the north of Yangtze River with the theme of "culture and creativity".



■ Infrastructure

Zhengzhou International Cultural & Creative Industry Park is located at the core of the high-speed rail network shaped like the Union Jack, with the "2-hour high-speed rail traffic circle" covering 480 million people; there are six highways nearby; Xinzheng International Airport and high-speed railway station are within a 20-minute traffic circle. The park houses the largest inland wetland park in Asia — Zhengzhou-Kaifeng Central Park, with an area of 26.5 square kilometers; Zhengzhou-Kaifeng ancient canal landscape cultural belt passed through the park; such public service projects as the First Affiliated Hospital of Henan University of CM, Maternal and Child Care Service Centre of Henan, Beijing Fuwai Hospital, Feng Yang Foreign Language School, Zhengzhou No. 1&8 United International School and Branson School go hand in hand; eight leisure and holiday hotels, i.e. Wyndham, InterContinental, Pullman, Cordis Hotels & Resorts, Le Meridien, Jianguo, Courtyard and Tonino Lamborghini Hotels, have settled in to support the development of the park.

■ Scope of Invitation

Three industries, i.e. culture and creativity, fashion and tourism and high-end business, which remain leading in China and first-rate globally.

■ Contact

Niu Yinghao

☎ +86-371-60212188

✉ lbzs1605@163.com

Zhengzhou Mazhai Industrial Cluster

Planning

Zhengzhou Mazhai Industrial Cluster is a "two-star" industrial cluster in Henan Province which takes modern food processing and high-end equipment manufacturing as the leading industries and focuses on the development of strategic emerging industries such as high-tech urban industries and productive service industries with high added value and much growth potential.

The cluster is located in the southwest of Zhengzhou City, with a total planned area of 30.4 square kilometers and a permanent population of over 100,000. It boasts its prominent leading industries, complete supporting facilities, obvious location advantages and convenient transportation conditions. At present, the planning has covered the whole region. In summary, this park has a good investment environment and great development potential.



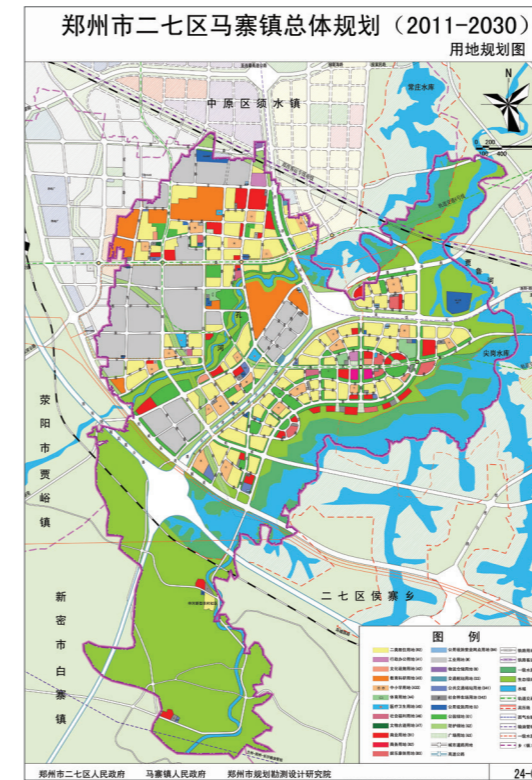
Carrier Profile

The cluster has gathered all kinds of enterprises such as Tingyi (Cayman Islands) Holding Corp., Huahua Niu, Suning and Zhengzhou New Dafang Heavy Industry Science and Technology Co., Ltd. It houses 37 national, provincial and municipal engineering and technology centers and R&D centers of enterprises and gathers 210 talents with a doctor's degree or professional titles above vice senior titles and 1,325 Masters or above. In total, it holds more than 2,021 patents and has been rated as "Two Fast" industrial clusters in Zhengzhou City for three consecutive years.

The cluster is two kilometers away from the central cultural district (CCD) of Zhengzhou City. There are three major water systems of Fenghu River, Jialu River and Jiayu River flowing through it and a 100,000-mu ecological conservation forest in the southern rural area remaining lush and green. The park boasts its convenient transportation and high-quality ecological resources.

Metro Line 6 and Metro Line 14 run through the whole area from north to south. Multiple trunk roads such as Zhengzhou-Shaolinsi Expressway, Zhengzhou Ring Expressway, Longhai Expressway and Fourth Ring Road form a road network. Thus, there is a 3-minute driving distance to expressways, 5-minute

driving distance to the downtown, 10-minute driving distance to Zhengzhou Municipal Administrative Service Center, 20-minute driving distance to Zhengzhou West Railway Station and 45-minute driving distance to the airport. Adjacent to the core area of the city, the cluster is totally integrated in the development strategy for the urban area of Zhengzhou City both in space and time.



Infrastructure

Zhengzhou Mazhai Industrial Cluster has been built with a "five vertical and five horizontal" trunk road network; it has two 110KV substations, which can meet the power supply demand of enterprises with an annual output value of RMB 40 billion; main tap water network and the pipe network in the park have been laid, which can meet the needs of all enterprises and residents in the park for water; the connection project with the urban sewage pipe network has been completed to separate rainwater from industrial sewage; the cluster has been provided with a sewage treatment plant with a daily sewage treatment capacity of 50,000 tons; the natural gas pipeline network and supporting facilities have been supplied for all trunk road networks and can meet the needs of enterprises and residents in the park for natural gas; the Yuneng Thermal Power, which is located in the west of the park, can provide central heating for the production of enterprises and the living of residents in the park. What's more, the cluster has been successively built with six service platforms for innovative services, investment and financing, e-commerce, talent information, legal services and public facilities as well as food testing centers. There are three colleges and universities in the cluster with about 50,000 students, providing sufficient human resources for enterprises in the area.



Scope of Invitation

Urban productive services, Advanced manufacturing, strategic emerging industries, digital economy industries, R&D headquarters, incubators, headquarters economy, high-end commercial hotels, ecological cultural tours, etc.

Contact

Wang Huimin

+86-371-67861417

+86-16638063120

zzmzic@126.com





Zhengzhou Linkong Biopharmaceutical Park

Planning

The project is located in the high-end manufacturing cluster in the south of Zhengzhou Airport Economy Zone and has a total planned area of 2,000 mu. Phase I of the project, with an investment of RMB 2.5 billion, covers an area of 384 mu and a total construction area of about 515,000 square meters, including a comprehensive incubation experiment center, a production group for pilot scale testing, a large-scale production plant, an exclusive logistics system, a display center and complete living facilities. The park is an innovative bio-pharmaceutical production park integrating specialization, scale and ecology.



Carrier Profile

The project is the core carrier for the development of biopharmaceutical industry in the airport zone. It is the largest innovation and entrepreneurship base for R&D and production of life science and biotechnology under construction in Henan Province. It has been evaluated as the municipal and provincial Science and Technology Business Incubator in Zhengzhou City, Henan Province.

The park takes the production-oriented R&D as the starting point and makes strategic planning for four core industries: innovative drugs, cell technology, IVD/third party testing and medical devices. As one of the key measures, it brings in a number of innovative biopharmaceutical enterprises with high growth and added value. By the end of 2019, the park has accumulated 75 high-quality projects. Among them, 56 projects have completed the signing and passed the expert review (including 1,125 exemptions), and 19 projects which are being negotiated show clear cooperation intention, further highlighting the industrial agglomeration effect.

Taking participating in industries and providing services for industries as the starting point, the park has established a VIC system for whole-process industrial support: first, the park, through professional planning and design, has established a well-established bearing space (with a floor height of 3.8-7.2m and a load of 10kN/m²) and professional supporting facilities (including the double-circuit power supply, steam, sewage treatment plant and dangerous goods warehouse) meeting the professional requirements of the biopharmaceutical industry, and has built a

domestic first-class industrial carrier by making use of its late-mover advantage.

Second, based on the regional advantages, the park takes production-oriented R&D as the breakthrough point to build public technical service platforms for the whole process of bio-pharmaceutical industry: a new drug screening and testing platform, a drug evaluation platform (animal room), a small molecule CMC preparation research and production platform, a large molecule pilot scale testing and large-scale production service platform and a cell technology service platform. It combines the hardware platform conforming to international standards with the international first-class operating team to solve the core bottleneck of enterprise during industrialization.

Meanwhile, relying on the Xing Gang system and using the Fund of Funds (FOF) of the airport worth of RMB 5 billion, the park, through cooperation with domestic first-tier professional funds, builds a complete market-oriented investment system covering Angel, VC, PE and pre-IPO, so as to guide high-quality enterprises to settle in the airport zone and grow at a high speed.

While building a leading industrial support system, the park, with the support of the Zhengzhou Commercial Bureau of Commerce, has successfully launched the name card of "bio-pharmaceutical city" of the airport zone by creating a series of high-end professional conferences and holding the Zhengzhou International Biopharmaceutical Development Summit, positioning the industry of the airport at the forefront of industry development.



Scope of Invitation

R&D and production of innovative drugs, IVD/third party testing, cell technology and application, medical devices, etc.

Contact

He Lixian ☎ +86-371-86199999 ✉ zzzbjqmj@126.com

Infrastructure

The park is designed by a professional design team of WSP Architects from Germany. It runs from the east to west with the central landscape belt as the axis of life and is divided into the northern district and the southern district based on the functions. The ground of the southern district is mainly used for offices, incubation centers and living facilities of enterprises; the northern district is used for R&D, pilot scale testing, production and logistics storage. At present, the 100,000-square-meter production plant for pilot scale testing has been roofed. The park is also equipped with double-circuit power supply, steam, sewage treatment plant and dangerous goods warehouse to fully meet the various professional needs of bio-pharmaceutical enterprises. In order to better serve the enterprises in the park and solve the bottleneck of enterprise in development, the park has invested RMB 500 million to build five major public technical service platforms: a new drug screening and testing platform, an animal drug evaluation platform, a large molecule pilot scale testing and large-scale production service platform, a small molecule CMC preparation research platform and a cell technology service platform, which provide whole-process support in innovation, R&D and production for enterprises in the park. Among them, the large molecule platform is the first CRO/CMO platform meeting both FDA and CFDA cGMP standards in Henan Province. It can provide CRO service and CMO service for the whole-process development and contract production of large molecule biopharmaceuticals, and has been listed in the third batch of "Pooling Talent to Zhengzhou• 1125 Talent Introduction Plan" in Zhengzhou City.



Zhengzhou Xingyang Health Park

Planning

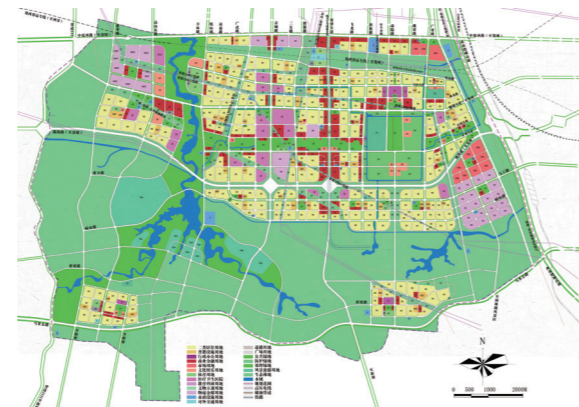
With a planned area of 117 square kilometers, the park extends to the Zhengzhou Southwest Ring Expressway in the east, to the Provincial Highway S232 in the west, to the Zhongyuan Road West in Zhengzhou in the north and to the Mami Highway and the scope line for planning and construction land of Cuimiao Town and Jiayu Town in the south. The Zhengzhou Xingyang Health Park is positioned as follows: taking "a new health-themed ecological compound city" as the overall strategic positioning, "a full-range health-themed demonstration area, a compound health care function area and a new livable ecological health city" as the overall positioning, the "medical care, science & education and R&D, leisure and health care, cultural tourism, business and commerce and pleasant living environment" as the specific functions and the medical care as the leading industry; integrating such relevant industries as medicine, leisure, old-age care and cultural tourism, and further promoting the agglomeration of medical and health industry, so as to build the park as the domestic influential area themed with medical care and health, a medical care and health cluster serving the Central Plains Economic Zone and a harmonious livable area leading the inclusive growth of Zhengzhou City.

Carrier Profile

The park boasts obvious location advantages, well-established transportation facilities and beautiful ecological environment. Zhengzhou-Xi'an High-Speed Railway and Metro Line 15 cross in the north of the park. Zhongyuan Road and Longhai West Extension Line pass through the park, so the transportation between the main urban area of Zhengzhou City and that of Xingyang is quite convenient. There is only a 20-minute driving distance from the park to Zhengzhou Municipal Committee of the Communist Party of China and People's Government of Zhengzhou Municipality. There are "three power sources" in the park. First, Zhengzhou West Railway Station, located at the junction of Zhongyuan Road and Xingze Avenue, has been officially upgraded, renamed and operated. Second, the improvement project of Suohe River has shown its landscape effect. Taking advantage of the water conservancy advantages of Suohe River and four reservoirs along the line, the project aims to build an ecological, livable

and healthy green corridor in the healthy city and improve the construction taste and grade of the whole healthy city. Meanwhile, the Wanshan Eco-tourism Area in the region has a forest area of over 6,000 mu. Third, the Xingyang Jingxiangcheng Relic Site Ecological Garden focuses on the protection of cultural relics and ecological construction and covers a green area of about 2,000 mu.

In addition, as a highlight in the planning and construction of the park, the Healthy Ecological Valley Green Belt Project has been started, which will definitely stimulate

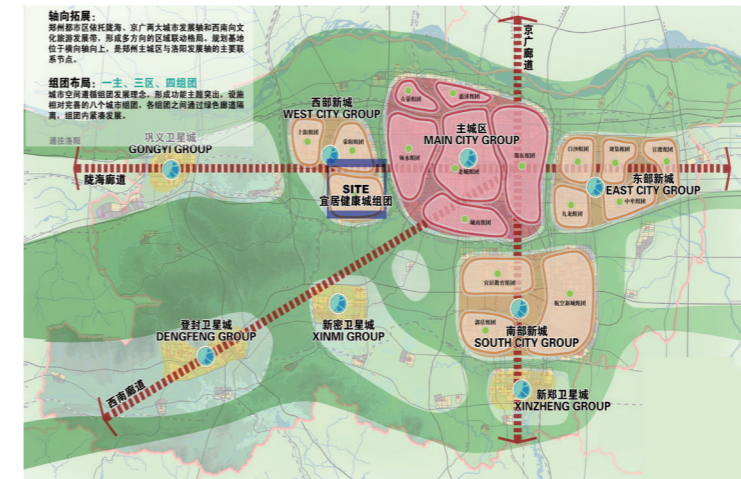


the development and construction of the whole park. Currently, the main development and construction area is the core starting area. It covers an area of 7 square kilometers and extends to the Zhiji Road South in the east, to the Jingcheng West Road in the west, to the Jiankang Avenue in the north and to the Zhengzhou Longhai West Extension Line in the south. The planning involves a resident population of about 75,000. The industries in the starting area are laid out along four vertical axes, namely, the ecological landscape experience axis on Tashan Road South, the medical care and health axis on the Jingcheng Road South, the business and commercial axis on the Xingze Avenue and the cultural experience axis on the Shangyin Road.



Infrastructure

In terms of municipal infrastructure construction, a "seven horizontal and eight vertical" road network pattern has taken shape. Rail Transit Line 10 starts from the Shangjie Airport in the Shangjie District and ends at the Zhengzhou Railway Station in the central urban city of Zhengzhou City. The line is mainly laid along the Zhongyuan West Road, West Ring Expressway, Zhengshang Road and Luoning Road, with a length of about 43.5 kilometers long. Line 21 starts from the Shangjie Airport Station in the Shangjie District and ends at Shengminggu South 2nd Road Station in the Health Park, passing along the Xingze Avenue and through the Xingyang City and Health Park, with a total length of 26.8 kilometers. The Zhengzhou West Railway Station was officially put into operation on December 18, 2015. At present, the number of stops has increased to 21. The train will travel to Beijing, Xi'an, Guangzhou and other places via more than 30 cities. The "Four Hospitals and One School" Project has realized a total investment of RMB 1.28 billion. The main projects of three hospitals have been completed. The interior decoration design of People's Hospital of Zhengzhou is detailed, and the interior decoration of Zhengzhou Orthopaedics Hospital and Women & Infants Hospital of Zhengzhou are in progress. Zhengzhou Health School has basically met the enrollment requirements. The construction of Zhengzhou Eighth People's Hospital is speeding up. The Zhengzhou Evergrande International Health Future City Project and Central China Health and Medical Care Big Data Industrial Park Project have been signed and implemented. At present, dozens of enterprises such as OCT, Bright Century Shareholding Group and Xinchuang Tech are still in further negotiations with the park.



Scope of Invitation

Health industries such as disease prevention, medical care, rehabilitation and health, elderly care, leisure and vacation, sports and fitness.

Contact

Song Benyu ☎ +86-371-69560222



Gongyi Industrial Cluster

Planning

Gongyi Industrial Cluster is the largest processing base for common aluminum plates, strips and foil in China. It is located in Huiguo Town, Gongyi City, an important node of Zhengzhou-Luoyang-Sanmenxia Industrial Corridor. It covers a planned area of 13.3 square kilometers and a built-up area of 4.28 square kilometers. It is mainly distributed in the north of G310 and expands industrial land and logistics land in the western part of Chuangye Avenue in the western urban area of Huiguo Town.

The leading industry is supported by the primary processing of aluminum plates and strips, with the emphasis laid on the deep processing of aluminum plates, strips and foil. The park actively cultivates new technology industries based on modern industries and develops services for life, R&D and logistics to form an industrial system that focuses on the secondary industry and realizes the coordinated development of the secondary and tertiary industries.



Carrier Profile

At present, more than 802 industrial and commercial enterprises of various types and 108 corporate enterprises have settled in the park, including 69 enterprises above the designated size, 42 enterprises with an output value of over RMB 100 million, nine enterprises with an output value of over RMB 1 billion, four leading aluminum processing enterprises with sales revenue of over RMB 3 billion, i.e. Mingtai Aluminum, Wanda Aluminum (WDA), Xintai Aluminum and Yongtong Aluminum and one listed enterprise, Mingtai Aluminum. Based on the industrial chain of aluminum deep processing, 32 aluminum processing enterprises and 63 supporting enterprises in machinery, packaging, logistics and storage have been concentrated, forming a product structure consisting of aluminum alloy plates for automobiles, ships and rail transits, aluminum building decoration materials, aluminum food packaging materials, aluminum substrates for printing, aluminum kitchen utensils, air conditioning foils, electronic foils and LED lamp fittings. In 2008, the cluster was listed in the first batch of provincial industrial clusters; in 2010, it was named by the Department of Science and Technology of Henan Province as the Characteristic High-Tech Industrial Base of Henan Province; in 2012, it was named by the Ministry of Industry and Information Technology of the People's Republic of China as the National-level New Industrial Industry Demonstration Base; it has been assessed as a two-star industrial cluster by the People's Government of Henan Province.



Scope of Invitation

Aluminum deep processing enterprises

Contact

Li Xiupeng

+86-15639915599

1340209834@qq.com

Infrastructure

In the area, the drainage system operates well, and the power supply is sufficient. At present, six 110KV substations and one 220KV substation have been built, and two gas companies have been set up, with a supply capacity of more than 1 million Nm³ per day, providing a strong energy guarantee for enterprises in the park. In the industrial cluster, there are two logistics enterprises, one logistics park and five residential areas under development. Supporting primary schools, kindergartens and hospitals have been put into use. Now, the supporting facilities in the cluster are basically complete, and the service functions are improving day by day, providing a relaxed and excellent external environment for enterprises.





▲ KEY PROJECTS
OF ZHENGZHOU

Aviation Maintenance and Service Project



Project Description

Rely on Zhengzhou Xinzheng International Airport to carry out airline maintenance and other business, build aviation maintenance and service bases, attract relevant enterprises to set up hangars or maintenance aprons in the airside area through agent construction or self-construction, and carry out the aviation maintenance and services such as aviation maintenance, component and accessory maintenance, aircraft coating and aircraft disassembly.

Name of Project Enterprise

Business and Logistics Development Bureau of Zhengzhou Airport Economy Zone

Proposed Cooperative Method

Sole proprietorship, joint venture and cooperation

Contact

Liu Zizhuo

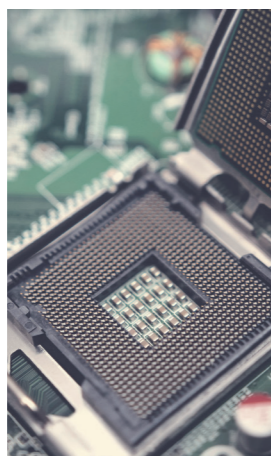
Industry Category

Advanced manufacturing

Contact Information

+86-15517560305

Consumer Electronics Supporting Project



Project Description

The Intelligent Terminal (Mobile Phone) Industry Park plans to cooperate with the leading suppliers of functional coating composite materials in China, and primarily focus on the functional materials for protection, fixation, electromagnetic shielding, electrical insulation, heat management of the electronic elements inside and outside the consumer electronics products.

Name of Project Enterprise

Business and Logistics Development Bureau of Zhengzhou Airport Economy Zone

Proposed Cooperative Method

Joint venture and cooperation

Industry Category

Electronic information

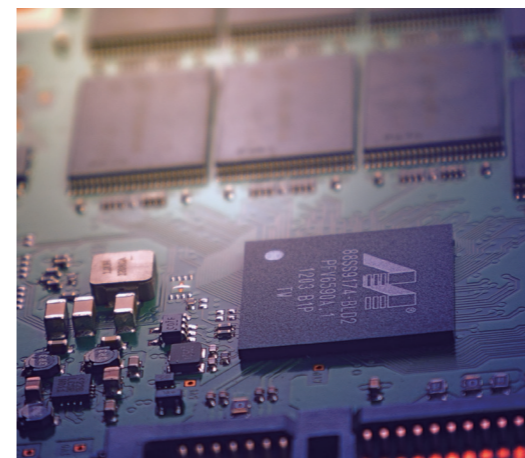
Contact

Liu Zizhuo

Contact Information

+86-15517560305

Xiaomi Eco-chain Enterprise Project



Project Description

The Intelligent Terminal (Mobile Phone) Industry Park plans to cooperate with the high-tech innovation enterprises in the field of commercial intelligent hardware and focus on Xiaomi Eco-chain Enterprises engaging in smart business.

Name of Project Enterprise

Business and Logistics Development Bureau of Zhengzhou Airport Economy Zone

Proposed Cooperative Method

Joint venture and cooperation

Industry Category

Electronic information

Contact

Liu Zizhuo

Contact Information

+86-15517560305

Kunpeng Town Project



Project Description

The project covers an area of 3.18 square kilometers (4,766 mu) and has a total investment of about USD 70 billion.

The project is planned to be developed and constructed in three phases. Phase I of the project covers an area of 1,690 mu, with an investment of about USD 1.7 billion and a construction area of about 1.4 million square meters. It mainly includes the construction of technology office buildings, hotel conference centers, residential apartments, commercial centers, schools, hospitals, stadiums, convenience centers, ecological water systems, green parks, traffic networks and other supporting projects.

After the completion of the project, it will focus on bringing in leading digital economy enterprises, well-known high-tech enterprises and enterprises related to Kunpeng computing industry.

Name of Project Enterprise

Zhengzhou Zhengbian Development and Construction Co., Ltd.

Proposed Cooperative Method

Settling

Industry Category

Modern service industry

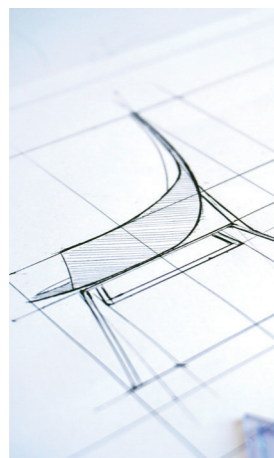
Contact

Jia Jinyu

Contact Information

0371-67179223 jfjswgz@126.com +86-18937178191

High-end Manufacturing R&D and Digital Cultural and Creative Industry Park Project



Project Description

The project plans to engage in the digital cultural and creative industries, including high-end manufacturing R&D design, creative design, game & animation and other fields. It intends to introduce the headquarters or regional headquarters, R&D centers and settlement centers of Fortune 500 Enterprises, industry leaders and unicorns in China and the world.

Name of Project Enterprise

Economic Development Bureau of Zhengdong New District Administrative Committee

Contact

Zhao Xuanhan

Proposed Cooperative Method

Sole proprietorship, joint venture and cooperation

Industry Category

Digital Economy

Contact Information

+86-18637166787

Life Science Industry Park Project



Project Description

The project plans to engage in the life science industry, including digital life, bio-pharmaceutics and other fields. It intends to introduce the headquarters or regional headquarters, R&D centers and settlement centers of Fortune 500 Enterprises, industry leaders and unicorns in China and the world.

Name of Project Enterprise

Economic Development Bureau of Zhengdong New District Administrative Committee

Contact

Zhao Xuanhan

Proposed Cooperative Method

Sole proprietorship, joint venture and cooperation

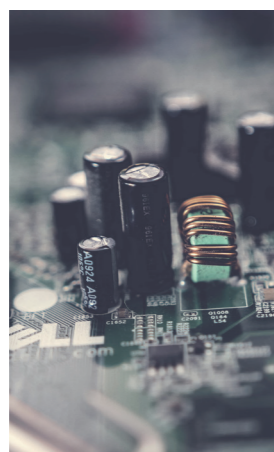
Industry Category

Bio-pharmaceutics

Contact Information

+86-18637166787

Information Technology Industry Park Project



Project Description

The project plans to engage in the information technology industry, including artificial intelligence (AI), mobile Internet, smart cities and other fields. It intends to introduce the headquarters or regional headquarters, R&D centers and settlement centers of Fortune 500 Enterprises, industry leaders and unicorns in China and the world.

Name of Project Enterprise

Economic Development Bureau of Zhengdong New District Administrative Committee

Contact

Zhao Xuanhan

Proposed Cooperative Method

Sole proprietorship, joint venture and cooperation

Industry Category

Information Technology

Contact Information

+86-18637166787

Future Technology Industrial Park Project



Project Description

The project plans to engage in cutting-edge science and technology, including advanced technology, technology and finance, education training, etc. It intends to introduce the headquarters or regional headquarters, R&D centers and settlement centers of Fortune 500 enterprises, industry leaders and unicorns in China and the world.

Name of Project Enterprise

Economic Development Bureau of Zhengdong New District Administrative Committee

Industry Category

Digital technology

Contact

Zhao Xuanhan

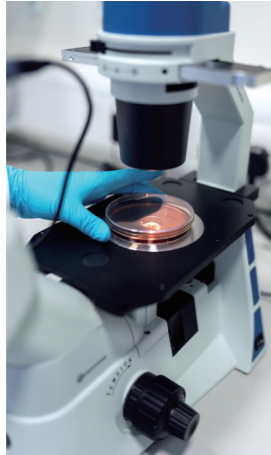
Proposed Cooperative Method

Sole proprietorship, joint venture and cooperation

Contact Information

+86-18637166787

Biomedical R&D Project



Project Description

Leverage organisms and their cellular, subcellular and molecular components and use engineering science, informatics and other means to carry out research and manufacturing of products, or to transform animals, plants, microorganisms, making them have the desired quality and characteristics. Make use of biotechnology to launch targeted therapy, medical beauty, herbal extraction and other related medical research projects.

Name of Project Enterprise

Commerce Bureau of National Zhengzhou Economic and Technological Development Zone

Contact

Chen Peixin

Proposed Cooperative Method

Sole proprietorship, joint venture and cooperation

Industry Category

Bio-pharmaceutics

Contact Information

+86-18539866567

5G and Big Data Project



Project Description

Rely on 5G technology to carry out the research projects in the field of VR/AR, Internet of Vehicles/autonomous driving, telemedicine, industrial Internet, smart cities, smart logistics, smart energy and smart education.

Name of Project Enterprise

Commerce Bureau of National Zhengzhou Economic and Technological Development Zone

Contact

Chen Peixin

Proposed Cooperative Method

Sole proprietorship, joint venture and cooperation

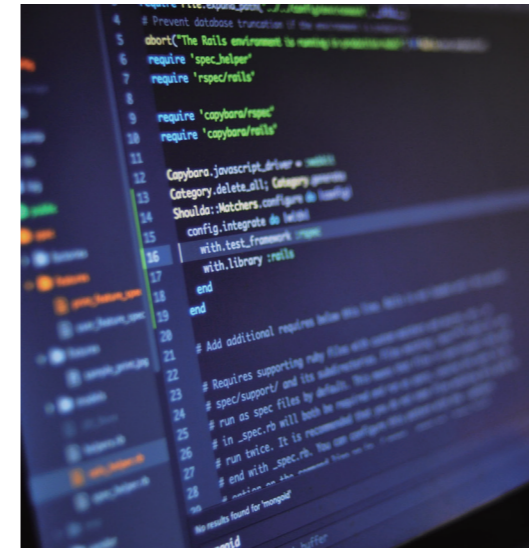
Industry Category

Digital Economy

Contact Information

+86-18539866567

Artificial Intelligence Project



Project Description

Actively introduce AI R&D enterprises centering on 5G, big data and intelligent technology; facilitate industrial agglomeration as soon as possible; strive to build the "seven industry chains"—independently controllable information system, intelligent security, big data, advanced communications, intelligent connected vehicles, industrial robots and intelligent terminals, and gradually establish and improve the innovation ecosystem for the AI industry based on the seven chains; promote the integration of industry and innovation chains; support the breakthrough in the three key generic technologies—edge computing chips, cognitive computing frameworks and intelligent control algorithms; advance the application demonstration of domestic basic hardware and software compatibility, industrial robots and advanced communications.

Name of Project Enterprise

Commerce Bureau of National Zhengzhou Economic and Technological Development Zone

Contact

Chen Peixin

Proposed Cooperative Method

Sole proprietorship, joint venture and cooperation

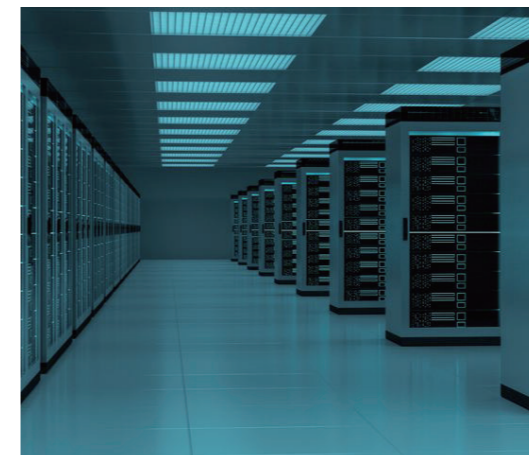
Industry Category

Digital Economy

Contact Information

+86-18539866567

SAIC Global Data Center Project



Project Description

The project mainly provides data statistics, data platform e-commerce and online e-commerce and other services for SAIC Phase I, SAIC Phase II and SAIC Parts Industrial Park. Auto parts companies are sincerely invited to settle in.

Name of Project Enterprise

SAIC Motor

Contact

Lu Hongjie

Proposed Cooperative Method

Settling

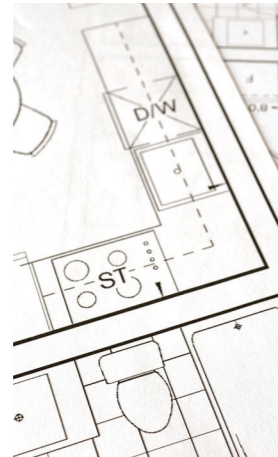
Industry Category

Advanced manufacturing

Contact Information

+86-13663816631

China (Zhengzhou) Intelligent Sensor Valley Starting Area Construction Project



Project Description

The project covers an area of about 337 mu and a total building area of about 1 million square meters, about 674,000 square meters of which is on the ground, and the land usage is classified as high-tech industrial land (M0). It focuses on introducing the projects related to the sensor industry.

Name of Project Enterprise

Administrative Committee of Zhengzhou National High & New Technology Industries Development Zone

Contact

Lu Shuo

Proposed Cooperative Method

Sole proprietorship, joint venture and cooperation

Industry Category

Advanced manufacturing

Contact Information

+86-15942457075

Network Information Security Ecosystem Construction Project



Project Description

The project plans to build a cyberspace security industry ecosystem covering 2-3 square kilometers and build a collaborative innovation belt for cyberspace security industry around Tianjian Lake by matching the model of Boston Route 128 and the idea of north-south symmetry and mutual complementarity. It focuses on introducing cyberspace security industry projects.

Name of Project Enterprise

Administrative Committee of Zhengzhou National High & New Technology Industries Development Zone

Contact

Wang Zhen

Proposed Cooperative Method

Sole proprietorship, joint venture and cooperation

Industry Category

Electronic information

Contact Information

+86-13663816631

Smart Industry Ecosystem Construction Project



Project Description

Centering on the construction of a smart city and the first novel model of "one platform and multiple peaks" + smart testing site in China, the project aims to build the real scenes of the zone with an area of 99 square kilometers and a population of nearly 800,000 into an experimental site for carrying out smart city projects. It also aims to realize an ecosystem featuring coexistence and common development of multiple leading enterprises, multiple applications, multiple industries and multiple scenes, and build a smart industry ecosystem with the high-tech characteristics. It focuses on attracting and introducing IoT industry eco-chain projects.

Name of Project Enterprise

Administrative Committee of Zhengzhou National High & New Technology Industries Development Zone

Contact

Lu Shuo

Proposed Cooperative Method

Sole proprietorship, joint venture and cooperation

Industry Category

Electronic information

Contact Information

+86-15942457075

Harbin Institute of Technology (HIT) Robot Industry Base Project



Project Description

Harbin Institute of Technology (HIT) sets up the HRG (Shandong) Intelligent Equipment Research Institute, a transformation platform of scientific and technological achievements, to make it the most famous AI base for innovation and entrepreneurship in the region. More AI projects are expected to settle in.

Name of Project Enterprise

HIT Robot Group (HRG)

Industry Category

Advanced manufacturing

Contact

Ren Cunbiao

Proposed Cooperation Mode

Settling

Contact Information

+86-13803848130

Zhengzhou Zhimajie Shuangchuang Park Project



Project Description

The project is located at No. 105, Huashan Road, Zhongyuan District, Zhengzhou City. It is in the central urban area of the city and also in the old industrial zone in the west of the city. The park is planned to cover 650 mu, and it is a combination of technological and cultural innovation based on the old factory area of Zhengzhou Coal Mining Machinery (Group) Co., Ltd. (ZMJ). The park aims to bring in scientific and technological enterprises and cultural and creative enterprises.

Name of Project Enterprise

Zhengzhou Zhimajie Industrial Co., Ltd.

Contact

Lu Pandeng

Proposed Cooperation Mode

Settling

Industry Category

Modern service industry

Contact Information

+86-13592543927

Precision Medicine and Health Industrial Park Project



Project Description

The project aims to build a precision medicine and health industrial park which integrates the cell therapy R&D center, cell preservation bank, cell culture and production center, clinical transformation center for cell therapy, Nobel Prize Science and Technology Innovation Center, tumor hospital and health care, medical care and eco-tourism center.

After the completion of the project, a health and cell therapy center which radiates across the central China and affects the whole country will be established, thereby greatly enhancing the popularity and influence of the Huiji District.

Name of Project Enterprise

The People's Government of Huiji District

Contact

Liu Kainan

Contact Information

0371-63639936 +86-18538772239

Proposed Cooperation Mode

Sole proprietorship, cooperation

Industry Category

Advanced manufacturing

Intelligent Air Conditioning Production Base Project



Project Description

The land plot is located in the northwest of Shangjie Ecological New City. It is planned to cover an area of about 1,500 mu. At present, a host of major manufacturing projects such as AUX Air Conditioning Base are under construction, and upstream and downstream enterprises of white goods are brought in to promote the agglomeration of white goods industry.

Name of Project Enterprise

The People's Government of Shangjie District

Contact

Niu Feiyu

Proposed Cooperation Mode

Sole proprietorship, joint venture, cooperation

Industry Category

Advanced manufacturing

Contact Information

0371-68118078

High-end Equipment Manufacturing Project



Project Description

The project is located in Xiaoguan Town, Gongyi City, covering an area of about 40 mu. It will transform the existing idle plants and focus on introducing high-end equipment manufacturing projects.

Name of Project Enterprise

Xiaoguan Town, Gongyi City

Contact

Chen Zhiqiang

Proposed Cooperation Mode

Cooperation

Industry Category

Advanced manufacturing

Contact Information

+86-18638167559

Yunzhi Town Project



Project Description

The project is located in Dayugou Town, Gongyi City. With a planned investment of RMB 23 billion and an industrial investment of RMB 8.5 billion, it aims to build a smart cloud industry ecosystem that is dominated by big data and supported by the information services, smart agriculture, financial technology and other fields, and promote the industrial transformation, upgrading and innovative development in Gongyi City.

Name of Project Enterprise

Dayugou Town, Gongyi City

Contact

Zhang Yong

Proposed Cooperation Mode

Joint venture and cooperation

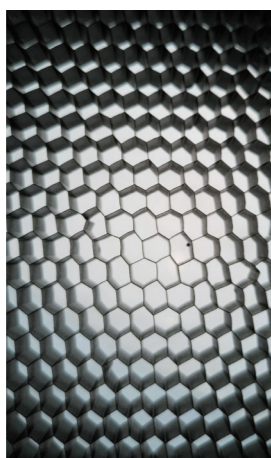
Industry Category

Electronic information

Contact Information

+86-18301138767

Project for Annual Output of 50,000 Tons of Aluminum Alloy Conductors



Project Description

The project is located in the Gongyi Yulian Industrial Cluster. It is planned to promote the construction of 1120 series alloy wires and build a production line for aluminum alloy wires with an annual output of 50,000 tons.

Name of Project Enterprise

Gongyi Yulian Industrial Cluster

Industry Category

Advanced manufacturing

Contact

Guo Yanbo

Proposed Cooperation Mode

Joint venture

Contact Information

+86-13526750666

Basalt Fiber and Related Product Project



Project Description

The project is located in Dengfeng High-tech Industrial Park, covering an area of about 200 mu. It plans to create 30 basalt fiber production lines, with an annual output of 30,000 tons.

Name of Project Enterprise

Commerce Bureau of Dengfeng City

Industry Category

New materials

Contact

Li Weimin

Proposed Cooperation Mode

Sole proprietorship, joint venture and cooperation

Contact Information

+86-18695825222

New Material (Amorphous Alloys) Industry Project



Project Description

The project is located in Zone B of the industrial cluster area. Relying on a group of influential enterprises in China, such as Henan Zhongyue Amorphous New Materials Co., Ltd. (CAETG) and Henan Longxiang Electric Co., Ltd. (LXDQ), it focuses on introducing an R&D system based on upstream and downstream chains of the amorphous alloy industry.

Name of Project Enterprise

Commerce Bureau of Dengfeng City

Industry Category

New materials

Contact

Yue Yapeng

Proposed Cooperative Method

Sole proprietorship, joint venture and cooperation

Contact Information

+86-13592552266

Intelligent Industrial Robot R&D and Production Base Project



Project Description

The project is located in the Xinmi National 863 Software Park of the industrial cluster area. It plans to introduce the projects related to the R&D and production of intelligent industrial robots.

Name of Project Enterprise

Commerce Bureau of Xinmi City

Contact

Zhang Jimin

Contact Information

+86-13938238484

Proposed Cooperative Method

Sole proprietorship, joint venture and cooperation

Industry Category

Advanced manufacturing

Electronic Information Industry Project



Project Description

This project is located in the CFLD New Industry City, Xinmi City, and plans to introduce electronic information enterprises mainly working on mobile phone parts.

Name of Project Enterprise

Commerce Bureau of Xinmi City

Industry Category

Electronic information

Contact

Zhang Jimin

Proposed Cooperative Method

Sole proprietorship, joint venture and cooperation

Contact Information

+86-13938238484

Comprehensive Logistics Distribution Base Project



Project Description

The project is located in Yuecun Town, Xinmi City. In order to standardize and integrate the existing logistics distribution enterprises, it is planned to build the comprehensive logistics distribution base in the Yuecun Section of the Zhengzhou-Xinmi Freeway based on the superior transportation location advantage. The base is about 15 kilometers away from the urban area of Zhengzhou City, with Zhengzhou-Shaolinsi Expressway in the north and Zhengzhou-Yaoshan Expressway in the east. The transportation is very convenient.

Name of Project Enterprise

The People's Government of Xinmi City

Industry Category

Modern service industry

Contact

Wang Chao

Proposed Cooperation Mode

Sole proprietorship, joint venture, cooperation

Contact Information

0371-68508027

+86-15393337513

J20xmsswj@163.com

Fully Automated Intelligent Industrial Robot Project



Project Description

Currently, industrial robot technology is gradually developing towards the direction of walking ability, multi-perception ability and strong adaptability to working environment. In such a background, the project is planned to be engaged in the R&D, production, practical training and promotion as well as application of fully automated intelligent industrial robots. Products will be widely used in automobile manufacturing, electronic and electrical industries and food industries.

Name of Project Enterprise

The People's Government of Xinyang

Industry Category

Advanced manufacturing

Contact

Wang Miao

Proposed Cooperation Mode

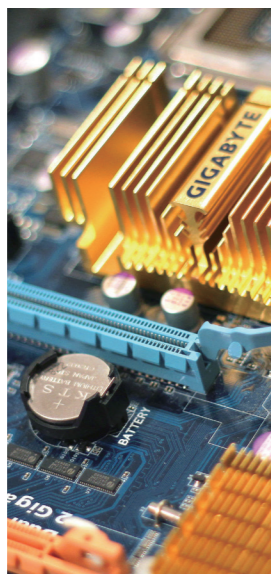
Sole proprietorship, joint venture, cooperation

Contact Information

0371-64629591

+86-15538003000

Intelligent Electric Appliances Industry City Project



Project Description

It is planned to invest in the construction of "Henan Xinyang Intelligent Electric Appliances Industry City" at the northeast corner of the intersection of Provincial Highway G310 and Miaowang Road in Xinyang City, using the existing industrial land of the former Longtai Electric Power Co., Ltd.

It aims to integrate the intelligent electric appliances industry and the construction standard of a smart city and serve as an industrial city with multiple functions, such as incubation of scientific and technological enterprises, entrepreneurship and education, innovation and R&D, achievements transformation, scientific and technological services, scientific and technological investment and financing services, talent gathering, digital life, smart city and life services.

Name of Project Enterprise

The People's Government of Xinyang

Industry Category

Advanced manufacturing

Contact

Wang Miao

Proposed Cooperative Method

Sole proprietorship, joint venture, cooperation

Contact Information

☎ 0371-64629591

📞 +86-15538003000

OLED New-Generation Flexible Display Material Project



Project Description

The project plans to engage in R&D, production and application of OLED new-generation flexible display materials. At present, OLED is in a period of rapid development, especially flexible AMOLED, which has broad application space. The key advantage of OLED is its flexibility, which realizes "flexible" display, increases the application scene and broadens imagination space of the traditional display screen.

Name of Project Enterprise

The People's Government of Xinyang

Industry Category

Advanced manufacturing

Contact

Wang Miao

Proposed Cooperation Mode

Sole proprietorship, joint venture, cooperation

Contact Information

☎ 0371-64629591

📞 +86-15538003000

Project on Construction Machinery 4S Shop in Zhengzhou International Construction Machinery Industry Park



Project Description

China Zhengzhou International Construction Machinery Industry Park is a high-standard and international professional construction machinery remanufacturing park integrating construction machinery remanufacturing, parts production, logistics and distribution, and comprehensive services. It plans to introduce brands such as Komatsu, Kobelco, Hitachi, Sumitomo, Tadano, Kato, Kubota, Yanmar, IHI, Doosan, Hyundai, USA's Grove, CAT, Terex, Liebherr and Germany's Grove.

Name of Project Enterprise

Xinyang City Industrial Cluster Area

Industry Category

Advanced manufacturing

Contact

Zhao Wanlu

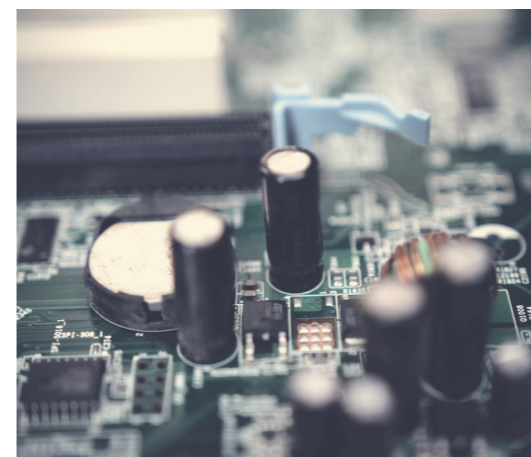
Proposed Cooperative Method

Sole proprietorship, joint venture and cooperation

Contact Information

📞 +86-18838157771

Intelligent Terminal Production Project



Project Description

The project plans to work on the R&D and production of flexible and rigid circuits, FPCs, HDIs, Rigid-Flex circuits and high-end modules. Its products are mainly used in mobile phones, automobiles, computers and other intelligent terminal equipment.

Name of Project Enterprise

Commerce Bureau of Xinzheng City

Industry Category

Electronic information

Contact

Zhang Shujun

Proposed Cooperative Method

Sole proprietorship, joint venture and cooperation

Contact Information

📞 +86-13603992811

IC Chip Production Project



Project Description

The project plans to engage in the R&D, production, and package testing of domestic chips, which will be used in various products such as military electronic equipment, office computers, desktop terminals and servers.

Name of Project Enterprise

Commerce Bureau of Xinzheng City

Industry Category

Electronic information

Contact

Zhang Shujun

Proposed Cooperative Method

Sole proprietorship, joint venture and cooperation

Contact Information

+86-13603992812

Middle and High-grade Car Parts R&D Project



Project Description

This project is mainly to construct the Middle and High-grade Car Parts R&D and Production Base.

Name of Project Enterprise

Commerce Bureau of Zhongmu County

Industry Category

Advanced manufacturing

Contact

Zhang Shengwei

Proposed Cooperative Method

Sole Proprietorship

Contact Information

+86-15981865213

Auto Parts and Supporting Production Project



Project Description

The project is to conduct the research on "new energy, new technology and new materials" by targeting at the "high strength and lightweight" of cars, form its independent core technologies and achieve the synchronous development and design with car manufacturers and modular supply of cars; it will fully implement "intelligent manufacturing", establish a robot automatic stamping production line and a robot welding production line at the headquarters and branch and realize the transformation from supplying single car parts to supplying assembly and modules.

Name of Project Enterprise

Commerce Bureau of Zhongmu County

Industry Category

Advanced manufacturing

Contact

Zhang Shengwei

Proposed Cooperative Method

Sole Proprietorship

Contact Information

+86-15981865213

Intelligent Driving System Project



Project Description

The project mainly focuses on the R&D of 5G-based intelligent driving systems.

Name of Project Enterprise

Commerce Bureau of Zhongmu County

Contact

Zhang Shengwei

Proposed Cooperative Method

Sole Proprietorship

Industry Category

Advanced manufacturing

Contact Information

+86-15981865213

Big Data Center Project



Project Description

By setting up a big data center, the project will create "China's Digital Valley" and "Big Data Capital", and provide big data solutions and technical support for finance, government, transportation, radio and television, construction, medical care, electric power and telecommunications through various sources of big data, including enterprise, medical care, finance, energy, education and communication. It plans to introduce big data industry projects, undertake the transfer of big data industry from Beijing, Shanghai, Guangzhou and Shenzhen, and cultivate big data incubation projects.

Industry Category

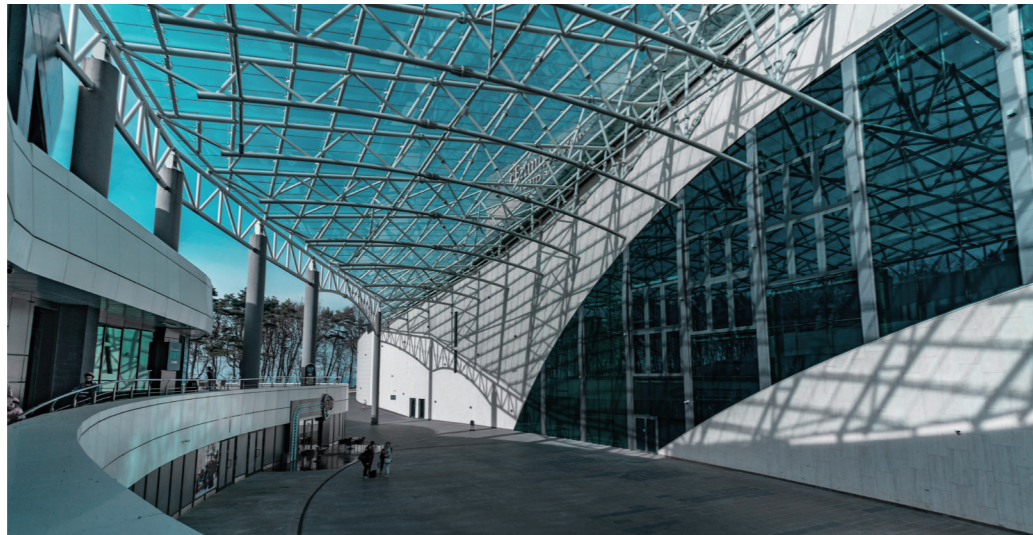
Digital economy

Proposed Cooperative Method

Sole proprietorship

Name of Project Enterprise

Commerce Bureau of Zhongmu County



Contact

Wang Qiongzhe

Contact Information

+86-13603992812